



March 31 – April 4, 2021

USEF National Hunters | USEF Level 4 Jumpers



classiccompany.com | 843-768-5503



OCALA, FLORIDA

Dear Trainers and Competitors,

Welcome everyone for the inaugural Ocala Spring Premier at the Florida Horse Park - USEF A rated event with Level 4 jumpers. We are very excited about this new venue. Please note, stalls are limited so it's important to reserve early.

Make plans to join us at this new event in Ocala set in the middle of 350 acres of manicured grounds following HITS Ocala and WEC. Ocala Spring Premier is followed by two weeks in Jacksonville at the Jacksonville Equestrian Center.

See you at the rings,
Bob

JUDGES & OFFICIALS

OCALA SPRING PREMIER

MARCH 31 - APRIL 4, 2021 | #340712

Hunter Judges: Tucker Ericson, Robin Swinderman

Jumper Judge: Allen Rheinheimer, Paul Jewell

Stewards: Debi Jaynes

Course Designers: Paul Jewell (Hunters)
Allen Rheinheimer (Jumpers)

RECOGNIZED BY

USEF A Rated | USEF Jumper Level 4

CFHJA

Louisiana Hunter Jumper Association

Marshall & Sterling League

Middle Tennessee Hunter Jumper Association

North Carolina Hunter Jumper Association

South Carolina Hunter Jumper Association

WIHS / NAL

Show Manager | Bob Bell

Show Technical Director | Allen Rheinheimer

Office Manager | Jonathan Rabon

Announcers | Jane Labyack

Veterinarian | Dr. Crystal Riczu (352-681-0188)

Farrier | Jack Montgomery & Co.

Safety Coordinator | Allen Rheinheimer

Stall Reservations

Jonathan Rabon jonathan@horseshowservices.com

Sponsor Sales & Public Relations Director

Lisa Davis Engel (908-310-6248)

Vendor Coordinator

Terri Ammerman (803-669-3591)



classiccompany.com | 843-768-5503



All Hunter Classes are held in accordance with USEF RULES and USHJA Zone 4 Specifications

USEF A RATED HUNTER DIVISIONS

PERFORMANCE HUNTERS

High Performance Hunter

Division Entry Fee: \$260 | **Class Entry Fee:** \$80

Prize Money: \$300 per Class

Fence Height: 4' to 4'6"

Class Numbers: 1, 2, 3 Hunter Over Fences |
4 Handy Hunter | 5 Under Saddle

Performance Hunter 3'6"

Division Entry Fee: \$240 | **Class Entry Fee:** \$70

Prize Money: \$240 per Class | **Fence Height:** 3'6"

Class Numbers: 6, 7, 8 Hunter Over Fences |
9 Handy Hunter | 10 Under Saddle

Performance Hunter 3'3"

Division Entry Fee: \$225 | **Class Entry Fee:** \$60

Prize Money: \$200 per Class | **Fence Height:** 3'3"

Class Numbers: 11, 12, 13 Hunter Over Fences |
14 Handy Hunter | 15 Under Saddle

GREEN HUNTERS

Green Hunter 3'9"

Division Entry Fee: \$240

Prize Money: \$240 per Class | **Fence Height:** 3'9"

Class Numbers: 16, 17 (1st Classic Round) |
18 Hunter Over Fences | 19 Handy Hunter |
20 Under Saddle

Green Hunter 3'6"

Division Entry Fee: \$240

Prize Money: \$240 per Class | **Fence Height:** 3'6"

Class Numbers: 21, 22 (1st Classic Round) |
23 Hunter Over Fences | 24 Handy Hunter |
25 Under Saddle

Sidelines Green Hunter 3'3"

Division Entry Fee: \$225

Prize Money: \$200 per Class | **Fence Height:** 3'3"

Class Numbers: 26, 27 (1st Classic Round) |
28, 29 Hunter Over Fences | 30 Under Saddle

Sidelines Green Hunter 3'

Division Entry Fee: \$225

Prize Money: \$200 per Class | **Fence Height:** 3'

Class Numbers: 31, 32 (1st Classic Round) |
33, 34 Hunter Over Fences | 35 Under Saddle

CONFORMATION HUNTERS

High Performance Conformation Hunter

Division Entry Fee: \$240

Prize Money: \$240 per Class | **Fence Height:** 3'9"

Class Numbers: 36, 37, 38 Hunter Over Fences |
39 Handy Hunter | 40 Under Saddle | 850 Model
(Model Entry Fee \$25)

Green Conformation Hunter

Division Entry Fee: \$240

Prize Money: \$240 per Class | **Fence Height:** 3'6"

Class Numbers: 41, 42, 43 Hunter Over Fences |
44 Handy Hunter | 45 Under Saddle | 851 Model
(Model Entry Fee \$25)

AMATEUR OWNER HUNTERS

Amateur Owner Hunter 3'6" 18-35

Division Entry Fee: \$240

Prize Money: \$240 per Class | **Fence Height:** 3'6"

Class Numbers: 46, 47 (1st Classic Round) | 48 Hunter
Over Fences | 49 Handy Hunter | 50 Under Saddle

Amateur Owner Hunter 3'6" 36 & Over

Division Entry Fee: \$240

Prize Money: \$240 per Class | **Fence Height:** 3'6"

Class Numbers: 51, 52 (1st Classic Round) | 53 Hunter
Over Fences | 54 Handy Hunter | 55 Under Saddle

Amateur Owner Hunter 3'3" 18-35

Division Entry Fee: \$240

Prize Money: \$240 per Class | **Fence Height:** 3'3"

Class Numbers: 56, 57 (1st Classic Round) | 58 Hunter
Over Fences | 59 Handy Hunter | 60 Under Saddle

Amateur Owner Hunter 3'3" 36 & Over

Division Entry Fee: \$240

Prize Money: \$240 per Class | **Fence Height:** 3'3"

Class Numbers: 61, 62 (1st Classic Round) | 63 Hunter
Over Fences | 64 Handy Hunter | 65 Under Saddle



JUNIOR HUNTERS**Small Junior Hunter 3'6" 15 & Under****Division Entry Fee:** \$240**Prize Money:** \$240 per Class | **Fence Height:** 3'6"**Class Numbers:** 66,67 (1st Classic Round) | 68 Hunter Over Fences | 69 Handy Hunter | 70 Under Saddle**Small Junior Hunter 3'6" 16 & 17****Division Entry Fee:** \$240**Prize Money:** \$240 per Class | **Fence Height:** 3'6"**Class Numbers:** 71, 72 (1st Classic Round) | 73 Hunter Over Fences | 74 Handy Hunter | 75 Under Saddle**Large Junior Hunter 3'6" 15 & Under****Division Entry Fee:** \$240**Prize Money:** \$240 per Class | **Fence Height:** 3'6"**Class Numbers:** 76, 77 (1st Classic Round) | 78 Hunter Over Fences | 79 Handy Hunter | 80 Under Saddle**Large Junior Hunter 3'6" 16 & 17****Division Entry Fee:** \$240**Prize Money:** \$240 per Class | **Fence Height:** 3'6"**Class Numbers:** 81, 82 (1st Classic Round) | 83 Hunter Over Fences | 84 Handy Hunter | 85 Under Saddle**Small Junior Hunter 3'3"****Division Entry Fee:** \$240**Prize Money:** \$240 per Class | **Fence Height:** 3'3"**Class Numbers:** 86, 87 (1st Classic Round) | 88 Hunter Over Fences | 89 Handy Hunter | 90 Under Saddle**Large Junior Hunter 3'3"****Division Entry Fee:** \$240**Prize Money:** \$240 per Class | **Fence Height:** 3'3"**Class Numbers:** 91, 92 (1st Classic Round) | 93 Hunter Over Fences | 94 Handy Hunter | 95 Under Saddle**PONY HUNTERS****Small Pony Hunter****Division Entry Fee:** \$225**Prize Money:** \$200 per Class | **Fence Height:** 2'3"**Class Numbers:** 96 (Conformation) | 97 (1st Classic Round) | 98 Hunter Over Fences | 99 Handy Hunter | 100 Under Saddle | 860 Model (Model Entry Fee \$25)**Medium Pony Hunter****Division Entry Fee:** \$225**Prize Money:** \$200 per Class | **Fence Height:** 2'6"**Class Numbers:** 101 (Conformation) | 102 (1st Classic Round) | 103 Hunter Over Fences | 104 Handy Hunter | 105 Under Saddle | 861 Model (Model Entry Fee \$25)**Large Pony Hunter****Division Entry Fee:** \$225**Prize Money:** \$200 per Class | **Fence Height:** 2'9"**Class Numbers:** 106 (Conformation) | 107 (1st Classic Round) | 108 Hunter Over Fences | 109 Handy Hunter | 110 Under Saddle | 862 Model (Model Entry Fee \$25)**GREEN PONY HUNTERS****Small/Medium Green Pony Hunter****Division Entry Fee:** \$200**Prize Money:** \$160 per Class | **Fence Height:** 2'3"**Class Numbers:** 111 (Conformation) | 112 (1st Classic Round) | 113, 114 Hunter Over Fences | 115 Under Saddle | 863 Model (Model Entry Fee \$25)**Large Green Pony Hunter****Division Entry Fee:** \$200**Prize Money:** \$160 per Class | **Fence Height:** 2'9"**Class Numbers:** 121 (Conformation) | 122 (1st Classic Round) | 123, 124 Hunter Over Fences | 125 Under Saddle | 865 Model (Model Entry Fee \$25)

For your safety and to reduce paperwork and streamline office work, all entries must be done on **HorseShowsOnline.com** for the Ocala Spring Premier. For adds/scratches, schedules, orders and online bill paying please go to **mobile.horseshowsonline.com**.

USEF ZONE 4 "C" RATED DIVISIONS**Adult Amateur Hunter 18-35**

Division Entry Fee: \$195 | **Class Fee:** \$50
Prize Money: \$100 per Class | **Fence Height:** 3'
Class Numbers: 151, 152 (1st Classic Round) |
 153, 154 Hunter Over Fences | 155 Under Saddle

Adult Amateur Hunter 36-49

Division Entry Fee: \$195 | **Class Fee:** \$50
Prize Money: \$100 per Class | **Fence Height:** 3'
Class Numbers: 156, 157 (1st Classic Round) |
 158, 159 Hunter Over Fences | 160 Under Saddle

Adult Amateur Hunter 50 & Over

Division Entry Fee: \$195 | **Class Fee:** \$50
Prize Money: \$100 per Class | **Fence Height:** 3'
Class Numbers: 161, 162 (1st Classic Round) |
 163, 164 Hunter Over Fences | 165 Under Saddle

Children's Hunter 14 & Under

Division Entry Fee: \$195 | **Class Fee:** \$50
Prize Money: \$100 per Class | **Fence Height:** 3'
Class Numbers: 166, 167 (1st Classic Round) |
 168, 169 Hunter Over Fences | 170 Under Saddle

Children's Hunter 15-17

Division Entry Fee: \$195 | **Class Fee:** \$50
Prize Money: \$100 per Class | **Fence Height:** 3'
Class Numbers: 171, 172 (1st Classic Round) |
 173, 174 Hunter Over Fences | 175 Under Saddle

Children's Hunter Pony

Division Entry Fee: \$175
Class Fee: \$50 | **Fence Height:** 2' & 2'6"
Class Numbers: 176, 177 (1st Classic Round) |
 178, 179 Hunter Over Fences | 180 Under Saddle

Thoroughbred Hunter

Division Entry Fee: \$175
Class Fee: \$45 | **Fence Height:** 3'
Class Numbers: 181, 182, 183, 184 Hunter Over
 Fences | 185 Under Saddle

USHJA HUNTER**USHJA Hunter 3'**

Division Fee: \$125
Class Fee: \$45 | **Fence Height:** 3'
Class Numbers: 186, 187 Hunter Over Fences |
 188 Under Saddle

USHJA Hunter 2'9"

Division Fee: \$125
Class Fee: \$45 | **Fence Height:** 2'9"
Class Numbers: 189, 190 Hunter Over Fences |
 191 Under Saddle

USHJA Hunter 2'6"

Division Fee: \$125
Class Fee: \$45 | **Fence Height:** 2'6"
Class Numbers: 192, 193 Hunter Over Fences |
 194 Under Saddle

USHJA Hunter 2'3"

Division Fee: \$125
Class Fee: \$45 | **Fence Height:** 2'3"
Class Numbers: 195, 196 Hunter Over Fences |
 197 Under Saddle

USHJA Hunter 2'

Division Fee: \$125
Class Fee: \$45 | **Fence Height:** 2'
Class Numbers: 198, 199 Hunter Over Fences |
 200 Under Saddle

PER CLASS HUNTER PRIZE MONEY

Hunter Prize Money awarded according to USEF HU112.7

\$500: \$150, \$110, \$75, \$60, \$55, \$50
\$300: \$90, \$66, \$45, \$36, \$33, \$30
\$240: \$73, \$53, \$36, \$28, \$26, \$24
\$200: \$60, \$44, \$30, \$24, \$22, \$20
\$160: \$48, \$35, \$24, \$19, \$18, \$16
\$140: \$42, \$31, \$21, \$16, \$15, \$14
\$100: \$30, \$22, \$15, \$12, \$11, \$10



UNRATED HUNTER DIVISIONS**2'6" Children's Hunter**

Open to all Junior Riders. Riders may not cross enter into any USEF Rated Divisions or any unrated classes with Fence heights higher than 2'9".

Division Entry Fee: \$175

Class Fee: \$45 | **Fence Height:** 2'6"

Class Numbers: 201, 202 (1st Classic Round) | 203, 204, Hunter Over Fences | 205 Under Saddle

2'6" Adult Hunter

See Zone Specs.

Division Entry Fee: \$175

Class Fee: \$45 | **Fence Height:** 2'6"

Class Numbers: 206, 207 (1st Classic Round) | 208, 209 Hunter Over Fences | 210 Under Saddle

Short/Long Stirrup Hunter

Open to all Adult & Junior Riders. Riders may not cross enter into any USEF Rated Divisions or any unrated classes with Fence heights higher than 2'6".

Division Entry Fee: \$175

Class Fee: \$45 | **Fence Height:** 2'

Class Numbers: 211, 212 (1st Classic Round) | 213, 214 Hunter Over Fences | 215 Under Saddle

Baby Green Hunter

Open to all Horses & Ponies that have not shown over Fences higher than 3'3".

Division Entry Fee: \$175

Class Fee: \$45 per Class | **Fence Height:** 2'6"

Class Numbers: 216, 217 (1st Classic Round) | 218, 219 Hunter Over Fences | 220 Under Saddle

BLUE/RED RIBBON HUNTER CLASSES

Class Fee for all Blue/Red Ribbon Classes: \$45

3'3" Non Pro Hunter

Fence Height: 3'3" | **Class Numbers:** 251, 252

3'0" Non Pro Hunter

Fence Height: 3' | **Class Numbers:** 253, 254

2'9" Non Pro Hunter

Fence Height: 2'9" | **Class Numbers:** 255, 256

2'3" Non Pro Hunter

Fence Height: 2'3" | **Class Numbers:** 259, 260

2' Non Pro Hunter

Fence Height: 2' | **Class Numbers:** 261, 262

Schooling Pony Hunter

Fence Heights: 2'3", 2'6", 2'9" | **Class Numbers:** 263, 264

3'6" Schooling Hunter

Fence Height: 3'6" | **Class Numbers:** 273, 274

Open Hunter Prep

Fence Height: Will move with Division Heights **Class Numbers:** 275, 276, 277, 278, 279

Non-Pro Hunter Prep

Fence Height: Will move with Division Heights **Class Numbers:** 280, 281, 282

EQUITATION & MEDAL CLASSES

All Equitation Classes are held in accordance with USEF Rules and USHJA Zone 4 Specifications.

Entry Fee for all Equitation Classes: \$45

11 & Under Equitation Over Fences

Fence Height: 2'6" | Class Number: 401

11 & Under Equitation Flat

Class Number: 402

12-14 Equitation Over Fences

Fence Height: 3' | Class Number: 403

12-14 Equitation Flat

Class Number: 404

15-17 Equitation Over Fences

Fence Height: 3'6" | Class Number: 405

15-17 Equitation Flat

Class Number: 406

2'6" Children's Equitation Over Fences

Fence Height: 2'6" | Class Number: 407

2'6" Children's Equitation Flat

Class Number: 408

Classes 407 & 408 are open to Child Riders that have not Jumped higher than 2'9" at the same show.

2'6" Adult Equitation Over Fences

Fence Height: 2'6" | Class Number: 409

2'6" Adult Equitation Flat

Class Number: 410

Classes 409 & 410 are open to Adult Riders that have not Jumped higher than 2'9" at the same show.

Short/Long Stirrup Equitation Over Fences

Fence Height: 2' | Class Number: 411

Short/Long Stirrup Equitation Flat

Class Number: 412

MISCELLANEOUS CLASSES

Leadline Class

No Entry Fee | Class Number: 801

Entry Fee for all Equitation Medal Classes: \$50

USEF/Dover Saddlery Hunt Seat Medal

Fence Height: 3'6" | Class Number: 430

Marshall & Sterling/USEF Pony Medal

Fence Heights: 2'3", 2'6", 3' | Class Number: 431

ASPCA

Fence Height: 3'6" | Class Number: 435

WIHS Pony

Fence Height: 2'3", 2'6", 3' | Class Number: 436

WIHS Hunter

Fence Height: 3'6" | Class Number: 437

WIHS Jumper

Fence Height: 3'6" | Class Number: 438

Platinum Performance USEF Show Jumping Talent Search 1*

**Fence Height: 1.10m to 1.15m (3'6"-3'9")
Class Number: 439**

USHJA Jumping Seat Medal

Fence Height: 3'3" | Class Number: 440

Ariat/THIS Adult Medal

Fence Height: 3' | Class Number: 441

Taylor Harris Insurance Services Children's Medal

Fence Height: 3' | Class Number: 442

Classic Company 2'6" Children's Medal

Fence Height: 2'6" | Class Number: 444

Class 444 is open to Child Riders that have not jumped higher than 2'9" at the same show.

Classic Company 2'6" Adult Medal

Fence Height: 2'6" | Class Number: 445

Class 445 is open to Adult Riders that have not jumped higher than 2'9" at the same show

Hamel NHS 3'3" Medal

Fence Height: 3'3" | Class Number: 446

USHJA 3'3" Hunt Seal Medal

Fence Height: 3'3" | Class Number: 447



JUMPER DIVISIONS

All Jumper Divisions will be held in accordance with USEF Rules and Zone 4 Specifications.

Declarations: Declarations must be made on the appropriate form in the show office the day before the class is to be held and by 5:00 p.m. or one hour after the last jumper class, whichever is later. Untimely declarations will be required to jump first in the order.

Ties: All ties involving first place shall be jumped off. Ties for other than first place shall be decided by time taken in the first round.

Order of Go: Order of Go will be posted at the in-gate of the Jumper Ring at least one hour prior to the class. Jump order will be drawn for all classes with \$5,000 or more in prize money. Trophy and Ribbons 1-6.

Championships: Championships in the JR/AO/AM, divisions will be calculated by points won in the two division classes and the Classic. In the Child, Adult, & Pony divisions all three regular classes will count towards the Championship.

Jumper Divisions and Classes

(No Nomination Fee required).

All Class Entry Fees: \$45

Training Jumper 0.75m

Fence Height: 0.75m/2'5" | Table II

Class Numbers: 496, 497, 498, 499

Training Jumper 0.85m

Fence Height: 0.85m/2'9" | Table II

Class Numbers: 500, 501, 502, 503

Training Jumper 0.95m

Fence Height: 0.95m/3'1" | Table II

Class Numbers: 504, 505, 506, 507

Training Jumper 1.00m

Fence Height: 1.00m/ 3'3" | Table II

Class Numbers: 508, 509, 510, 511

Training Jumper 1.10m

Fence Height: 1.10m/3'7" | Table II, 2.b

Class Numbers: 512, 513, 514

Training Jumper 1.15m

Fence Height: 1.15m/3'9" | Table II, 2.b

Class Numbers: 516, 517, 518

Training Jumper 1.20m

Fence Height: 1.20m/3'11" | Table II, 2.b

Class Numbers: 520, 521, 522

Pony Jumper 1.05m

Fence Height: 1.05m/3'5" | Table II, 2.b

Class Numbers: 524, 525, 526

Child/Adult Jumper 0.85m

Fence Height: 0.85m/2'9" | Table II, 2.b

Class Numbers: 527, 528, 529

Child/Adult Jumper 1.0m

Fence Height: 1.00m/3'3" | Table II, 2.b

Class Numbers: 533, 534, 535

Child/Adult Jumper 1.10m

Fence Height: 1.10m/3'7" | Table II, 2.b

Class Number: 536, 537

Child/Adult 1.10m

Fence Height: 1.10m/3'7" | Table II, 2.1

Class Number: 538

Child/Adult Jumper 1.15m

Fence Height: 1.15m/3'9" | Table II, 2.b

Class Numbers: 542, 544

Child/Adult Jumper 1.15m

Fence Height: 1.15m/3'9" | Table II, 2.1

Class Number: 543



NOMINATED JUMPER DIVISIONS AND CLASSES**(\$200 Nomination Fee Required)**

JR/AO/AM Jumper Divisions 1.30m and 1.40m will run combined. Divisions will be split if there are 8 entries in each section.

JR/AO/AM Jumper 1.20m

Class Entry Fee: \$70 | **Prize Money:** \$750 per class
Fence Height: 1.20m/3'11" | Table II, 2.b
Class Number: 562

JR/AO/AM Jumper 1.20m

Class Entry Fee: \$70 | **Prize Money:** \$750 per class
Fence Height: 1.20m/3'11" | Table II, 2.1
Class Number: 563

JR/AO/AM Jumper 1.30m/1.40m

Class Entry Fee: \$140 | **Prize Money:** \$1,500 per class
Fence Height: 1.30m/4'3" | 1.40m/4'7" | Table II, 2.b
Class Number: 564

JR/AO/AM Jumper 1.30m/1.40m

Class Entry Fee: \$140 | **Prize Money:** \$1,500 per class
Fence Height: 1.30m/4'3" | 1.40m/4'7" | Table II, 2.1
Class Number: 565

Open Jumper 1.20m

Class Entry Fee: \$70 | **Prize Money:** \$750 per class
Fence Height: 1.20m/3'11" | Table II, 2.b
Class Numbers: 568, 569

Open Jumper 1.20m

Class Entry Fee: \$70 | **Prize Money:** \$750 per class
Fence Height: 1.20m/3'11" | Table II, 2.1
Class Numbers: 570

Open Jumper 1.30m

Class Entry Fee: \$80 | **Prize Money:** \$1,000 per class
Fence Height: 1.30m/4'3" | Table II, 2.b
Class Numbers: 571, 572

Open Jumper 1.30m

Class Entry Fee: \$80 | **Prize Money:** \$1,000 per class
Fence Height: 1.3m/4'3" | Table II, 2.1
Class Numbers: 573

Open Jumper 1.35m

Class Entry Fee: \$140 | **Prize Money:** \$1,500 per class
Fence Height: 1.35m/4'5" | Table II, 2.b
Class Numbers: 574

Per Class Jumper Prize Money

(awarded in accordance with JP.108)

\$1,500: \$470, \$320, \$220, \$190, \$160, \$140

\$1,000: \$365, \$240, \$125, \$100, \$90, \$80

\$750: \$235, \$160, \$110, \$95, \$80, \$70

\$500: \$140, \$100, \$75, \$65, \$60, \$60



For your safety and to reduce paperwork and streamline office work, all entries must be done on **HorseShowsOnline.com** for the Ocala Spring Premier. For adds/scratches, schedules, orders and online bill paying please go to **mobile.horseshowsonline.com**.

HUNTER CLASSICS

Eligibility for Classes 600-621: Must have entered, shown, and completed at least two over fences classes in the same division at the same show. For all Classics, a designated class of the division will count as the first round of the classic, with the top twelve scores returning to jump a second course (the top 20 Junior Hunters will return). The second round competitors will return in order of lowest score to highest. In case of ties, order of those tied will be drawn. Scores will be averaged from both rounds to determine the winners. In case of ties, the second round will serve as tie breaker. Awards for Classes 600-621: Trophy & Ribbons 1-12. **Hunter Classics will run in accordance with USEF Rules and USHJA Zone 4 Specifications. Classes 614, 615, & 616 will be run in accordance with and Prize Money distributed per the USHJA specifications that are listed at USHJA.org.**

A/O Hunter Classic

Entry Fee: \$100 | **Prize Money:** \$1,000
Fence Height: 3'3" & 3'6" | **Class Number:** 600

Junior Hunter Classic

Entry Fee: \$100 | **Prize Money:** \$1,000
Fence Height: 3'3" & 3'6" | **Class Number:** 602

Pony Hunter Classic

Entry Fee: \$50 | **Prize Money:** \$500
Fence Height: 2'3", 2'6", 2'9" | **Class Number:** 605

NAL/WIHS AA Hunter Classic

Entry Fee: \$50 | **Prize Money:** \$500
Fence Height: 3' | **Class Number:** 609

NAL/WIHS Children's Hunter Classic

Entry Fee: \$50 | **Prize Money:** \$500
Fence Height: 3' | **Class Number:** 612

USHJA Green Incentive

Entry Fee: \$100+USHJA Fee | **Prize Money:** \$1,000
Fence Height: 3'6" & 3'9" | **Class Number:** 614

USHJA Green Incentive

Entry Fee: \$100+USHJA Fee | **Prize Money:** \$1,000
Fence Height: 3' & 3'3" | **Class Number:** 615

USHJA Green Challenge 3' & 3'3"

Entry Fee: \$100+USHJA Fee | **Prize Money:** \$1,000
Fence Height: 3' & 3'3" | **Class Number:** 616

Child Hunter Pony Classic

Entry Fee: \$45 | **Fence Height:** 2' & 2'6"
Class Number: 617

2'6" Children's Hunter Classic

Entry Fee: \$45 | **Fence Height:** 2'6"
Class Number: 618

2'6" Adult Hunter Classic

Entry Fee: \$45 | **Fence Height:** 2'6"
Class Number: 619

Baby Green Hunter Classic

Entry Fee: \$45 | **Fence Height:** 2'6"
Class Number: 620

SS/LS Hunter Classic

Entry Fee: \$45 | **Fence Height:** 2'
Class Number: 621

Six (6) entries are required to conduct a Hunter Classic. If there are fewer than six (6) entries in any one Hunter Classic, it may be combined or cancelled.

Hunter Classic Prize Money

\$1,000: \$300, \$220, \$150, \$100, \$80, \$50, \$50, \$50
\$500: \$150, \$110, \$75, \$50, \$40, \$25, \$25, \$25



Marshall & Sterling Classic Hunter Derby + Non-Pro Rider Bonuses

Fence Height: 3' to 3'3" with 3'3" Options & 3'3" to 3'5" with 3'5" Options

Non-Pro Rider Bonus: A bonus will be awarded to the top three scoring Non-Pro Riders in the Low Section and the top three scoring Non-Pro Riders in the High Section.

Entry Fee: \$200 (1-19 Starters)

\$2,000 Prize Money (1-19 Starters): \$600, \$440, \$300, \$200, \$150, \$110, \$100, \$100

\$1,000 Non-Pro Rider Bonus (1-19 Starters)

\$500 Low Section: \$250, \$150, \$100

\$500 High Section: \$250, \$150, \$100

Entry Fee: \$250 (20 or more Starters)

\$3,000 Prize Money (20 or more Starters):

\$900, \$600, \$420, \$300, \$240, \$210, \$180, \$150

\$2,000 Non-Pro Rider Bonus (20 or more Starters)

\$1,000 Low Section: \$500, \$300, \$200

\$1,000 High Section: \$500, \$300, \$200

Class Number: 630



**JOIN US FOR 2 WEEKS
IN JACKSONVILLE!**

**APRIL 7-11, 2021
APRIL 14-18, 2021**

THE JACKSONVILLE EQUESTRIAN CENTER
Jacksonville, Florida


classiccompany.com
843-768-5503

JUMPER CLASSICS

Classes 650 & 651 are classes that require Nomination with the \$200 Nomination Fee mentioned in the Nominated Jumper Section. All Jumper Classics run in accordance with USEF Rules and USHJA Zone 4 Specifications.

Ocala Open Jumper Classic

Entry Fee: \$250 | **Prize Money:** \$5,000
Fence Height: 1.25m/4'1" | Table II, 2.b
Class Number: 650

Ocala Welcome Stake

Entry Fee: \$375 | **Prize Money:** \$7,500
Fence Height: 1.30m/4'3" | Table II, 2.b
Class Number: 651

Eligibility for Classes 655-676: To be eligible, a rider must have entered in at least one other class of the same division at the same show.

Attire for Classes 655-676: Formal Attire.

Awards for Classes 655-676: Trophy & Ribbons 1-8.

No Nomination Fee for class 660.

Child/Adult Jumper .85m

Entry Fee: \$45 | **Fence Height:** .85m/2'9"
Class Number: 655

Child/Adult Jumper 1.0m

Entry Fee: \$50 | **Prize Money:** \$500
Fence Height: 1.00m/3'3" | **Class Number:** 659

NAL/WIHS Child/Adult Jumper

Entry Fee: \$160 | **Prize Money:** \$2,000
Fence Height: 1.10m/3'7" | **Class Number:** 660

NAL JR/AO/AM Jumper

Entry Fee: \$120 | **Prize Money:** \$2,500
Fence Height: 1.20m/3'11" | **Class Number:** 668

JR/AO/AM Jumper 1.30m/1.40m

Entry Fee: \$200 | **Prize Money:** \$3,000
Fence Height: 1.30m/4'3" | 1.40m/4'7"
Class Number: 676

Classes 655-676 will be USEF Table II, 2.b. If there are less than Eight (8) entries in any Jumper Classic, then the Classics will be combined. Horses may compete in only one JR/AO/AM Classic.

Jumper Classic Prize Money

\$7,500: \$2,250, \$1,500, \$1,050, \$750, \$600, \$525, \$450, \$375
\$5,000: \$1,500, \$1,000, \$700, \$500, \$400, \$350, \$300, \$250
\$3,000: \$950, \$600, \$500, \$300, \$200, \$180, \$150, \$130
\$2,500: \$750, \$500, \$350, \$250, \$200, \$175, \$150, \$125
\$2,000: \$500, \$300, \$260, \$240, \$200, \$180, \$160, \$160
\$500: \$150, \$110, \$80, \$60, \$50, \$50



For Classic Company Events Sponsorship and Advertising Opportunities

please contact:

Lisa Davis Engel, Sponsor Sales & Public Relations Director
 908-310-6248 | lisa@classiccompany.com

GRAND PRIX SECTION

Entry Fee: \$500

All Grand Prix classes will be conducted and scored under Table II, 2.a. Grand Prix horses must have entered into another nominated jumper class at the same show. ALL HORSES MUST BE ON THE SHOW GROUNDS 24 HOURS PRIOR TO THE CLASS TO COMPLY WITH THE 24 HOUR RULE. Horses not on the grounds prior to that time will not be able to compete per USEF JP150.9a.

Class Conditions: Open Regional Standard: 1.35m - 1.40m with spreads to 1.55m, excluding Triple Bar and Water Jump. At least 6 Verticals and 4 Oxers must be set at 1.40m. The maximum spread for the Triple Bar is 1.85m, and the maximum spread for the Water Jump is 3.60m

Order of Go: All horses showing in class 777 must be declared 24 hours prior to the class.

Poling: Absolutely no poling or offsets are allowed at any time on the Florida Horse Park.

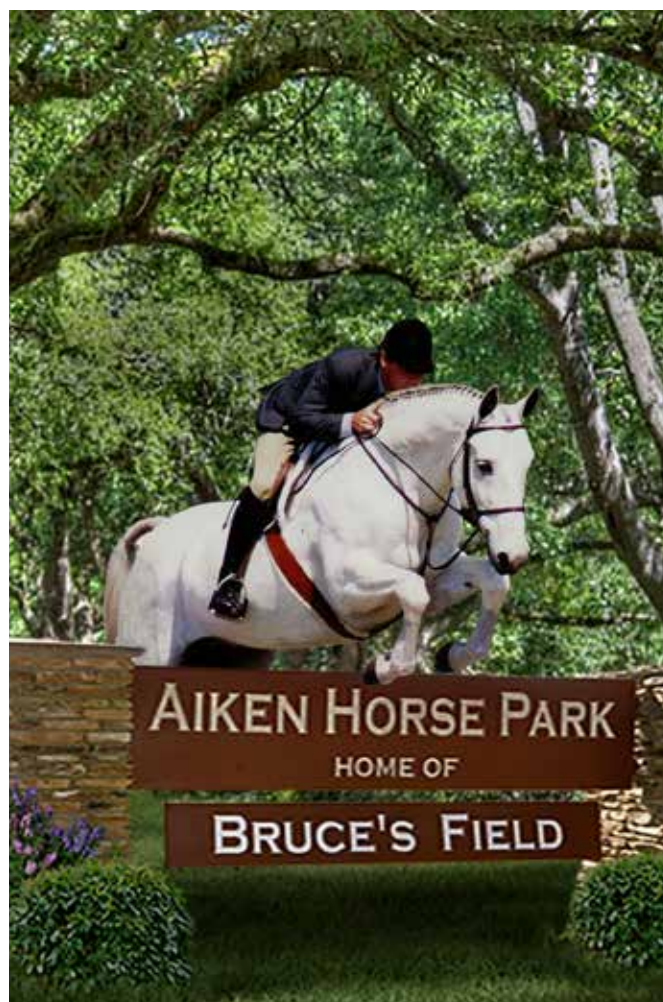
Attire: Formal attire required.

Awards: Winners to ride for presentation of awards. Trophy and Ribbons 1-12.

Prize Money: \$7,500, \$5,500, \$3,250, \$2,000, \$1,500, \$1,250, \$1,000, \$750, \$750, \$500, \$500, \$500

\$25,000 Grand Prix

Class Number: 777



June 16-20, 2021

June 23-27, 2021

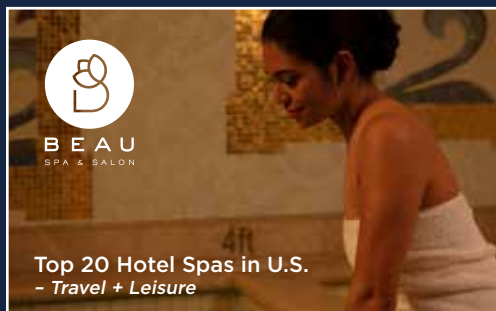


CLASSICCOMPANY.COM
843-768-5503

A FEELING LIKE NO OTHER®



PROUD SPONSOR

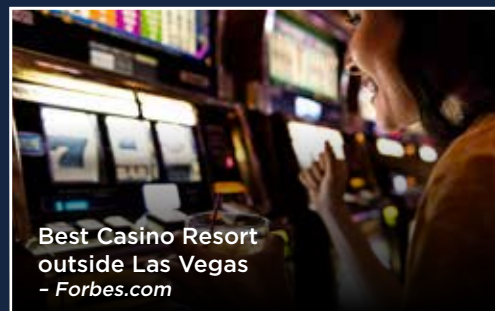


Top 20 Hotel Spas in U.S.
- Travel + Leisure



Best Course
You Can Play 2019
- Golfweek

Fallen Oak



Best Casino Resort
outside Las Vegas
- Forbes.com

Beau Rivage is the ultimate resort on the Gulf Coast for a getaway with the best headliners and nightlife, sports entertainment, amenities, shopping and golf. Our luxurious amenities, including our tropical oasis pool, award-winning spa and restaurants, such as TAP Book, Bar and Bistreaux, Black Clover Lounge and Topgolf® Swing Suite, are the perfect pre- and post-event relaxation you deserve.

Plan your visit at BEAURIVAGE.COM or call 1.888.567.6667.



MGM RESORTS
INTERNATIONAL®

Beau Rivage
RESORT & CASINO • BILOXI



Every class offered herein which is covered by the rules and specifications of the current USEF Rule Book will be conducted and judged in accordance therewith. **Life, senior active and junior active members shall be eligible to participate in all classes at Regular Competitions, Eventing Competitions at the Preliminary Level or above and Combined Driving Competitions at the Advanced Level, Dressage, Reining and Vaulting Competitions and Endurance Rides. A non-member may participate as a handler, rider, driver, owner, lessee, agent, coach or trainer at Regular Competitions, Eventing Competitions, Dressage Competitions, Reining Competitions and Combined Driving Competitions upon payment of a \$45 show pass registration fee. Participants in the following classes are exempted from the Requirements of this rule: 1) leadline; 2) exhibitions; 3) games and races; 4) classes for 4-H members; 5) walk trot and academy classes (academy classes are classes limited to horses used regularly in a lesson program); 6) USDF introductory level tests, pas de deux and quadrille classes; 7) NRHA Endorsed Reining Competitions. 8) Opportunity classes, 9) citizens of other nations who have proof, in English, of current membership in good standing of their own National Federation, 10) USEA beginner novice division; and 11) assistant handlers in Dressage Sport Horse Breeding classes.**

The Horse Show Committee reserves the right to interpret all questions and conditions in regard to or arising out of, or incident to the show without claims for damages or recourse of any kind. All questions not covered in these Rules and Regulations shall be decided by the Horse Show Management; its decision to be final.

The Horse Show Management reserves the right to limit entries in any class, section or division, to refuse, accept conditionally, or to cancel any entries, disqualify any riders or exhibitors, prohibit exhibition of entries, and cancel award prizes, without any claim for damages; to change any course, to add a dotted line, to cancel or combine any unfilled classes, or to reschedule classes, after due notice to exhibitors; to change rings or rotate judges; to change specifications in jumper classes as competition warrants. Every horse entered herein for competition will be under the control of the Horse Show Management, but the Show Management will in no case

be responsible for any loss or damage that may occur, and it shall be a condition of entry that each exhibitor shall hold the horse show and the officials, employees, directors, officers, sponsoring entities of the horse show and the facilities at which the horse show is held blameless for any loss or accident to his horse(s), employee(s), or equipment which may occur from sickness, fire or other cause. Each horse entered for competition will be assessed a USEF Fee of \$23 (USEF Fees \$15/Drug \$8) + \$7 USHJA Fee. **While every effort has been made to avoid mistakes in this publication, the USEF, the Classic Company, Ltd. and its management assume no liability to anyone for errors. Any significant errors or changes will be disclosed to competitors whose entries are accepted upon their acceptance, and otherwise in accordance with USEF rules.**

Entries and Post Entries: Entries close on Wednesday, March 3, 2021. After March 3, 2021, deposits are non-refundable. There will be a late fee of \$50 for entries received to the show office after the closing date. Entry Numbers WILL NOT be issued without either a SIGNED OPEN CHECK or current Credit Card information lodged with the Horse Show Secretary. The entry form for each show must include the following:

- Horse name and complete description;
- All classes or divisions entered;
- All mandatory signatures, including legal guardian in the case of a minor exhibiting;
- Organization membership numbers;
- Social Security or Federal ID number of owner.

Entries: Closing Date for Entries is Wednesday, March 3, 2021. All entries MUST be done online. There will be a late fee of \$50 for entries received by the show office after the closing date. Go to horseshowsonline.com for your online entry service. Trainers please call, email or text indicating the TOTAL number of stalls required (horse and tack) and a good contact number.

Entries on HorseShowsOnline.com only: For your safety and to reduce paperwork and streamline office work, all entries must be done on HorseShowsOnline.com for the Ocala Spring Premier. Paper entries **will not** be accepted. Entries must be done for each week and will require the \$75 office/deposit fee to be paid. Payments will not be reversed, credited to other bills, moved, etc. Please ensure the correct payment

method is used for each entry. Classes should be entered in advance to help us plan your schedules. Add Scratches will only be done through mobile. horseshowsonline.com. Office visits must be short and limited to one representative per barn. eBills will be sent out on Sunday to the Invoice Payer defined in the online entries. If you have an office manager who pays the customers bills, they should be sent there, if they customers pay, email and cell phone number will be required at the time of entry. Trainers can receive PDFs of all of their customers' invoices on Saturday evening for review and changes first thing each Sunday morning.

Credit Cards: There will be a 2.7% fee for using credit cards for check out.

Scratched Horses: Horses scratched from the show before the closing date will receive a full refund. Horses scratched before arriving but after the closing will be charged the stall fee unless that stall is sold. Horses scratched after arrival will be charged the stall fee, night watch fee, and the service fee.

Stabling: Horses may arrive on the show grounds starting on **Monday, March 29, 2021**. Stalls, whether occupied by horse, feed or tack, will be available **Monday, March 29, 2021**. Initial bedding will not be provided. As stabling will be limited this year, the Monday - noon move in/move out stipulation will be strictly enforced. For any exceptions to the above, please call 843-768-5503.

Stalls: 12' x 12' with doors are \$250 per week.

Night Watch: All horses occupying a stall, whether showing or not, will be required to pay a show night watch fee of \$20 per show. This service is not optional. Horses will be checked 6 times a night each night of that show week.

Competition Office Hours

Competition Days: Office opens one hour before the start of the first class and closes 30 minutes following the last class.

Check Out: Any horse show bills not checked out at the conclusion of each show will be assessed a \$50 fee for check out. *Any mistakes at check out must be resolved within 24 hours.* Check your bills carefully.

Day Exhibitors: Horses entered but not stabled must use the designated area for day exhibitors. \$50 grounds fee.

Service Fee: All horses, showing or non-showing, will be assessed a fee of \$75. This fee allows the horse UNLIMITED add/scratches from classes, access to schooling areas and rings at designated times and defers all charges for parking passes.

Splitting of Tack Stalls: The horse show office will be happy to split the tack stalls per the Trainer's instructions among his/her customers up to each Friday at 11:00 a.m. At that point, the total amount will be billed to the trainer's barn account. Schooling: Schooling in the show rings without permission is prohibited at all times. This includes riding, exercising and lunging. \$100 fine for anyone caught in the rings before or after the show without permission and they will be eliminated from competition.

Lunging: All lunging will be restricted to designated areas. Lunging will not be permitted in ANY ring areas at any time.

Feed & Bedding: A link for feed and bedding orders will be available online at classiccompany.com. In order to assure exhibitors of an adequate supply of feed, hay, and bedding based on fair market prices, no feed vendor other than Ocala Spring Premier Horse Show Services will be permitted on the grounds without the express permission of management. For same day delivery, feed orders must be received prior to 12:00 noon. For feed and bedding reservations prior to arrival, call 843-768-5503

Farrier: No farrier other than the official competition farrier will be permitted to shoe on the grounds without express permission of the management. All Farriers must use the designated Farrier area.

Non-Negotiable Checks & Credit Cards: Checks returned by the bank for any reason will be assessed a penalty of \$50 or 10% of the check amount, whichever is greater. Upon notification of a returned check, accounts will be given three (3) days to make full payment, including the penalty, which must be paid in certified funds, cashier's check or money order. Overnight mail service is advised in order to avoid notification of the sanctioning organizations for disciplinary action.



Poling and Off-Sets: Manual poling and use of bamboo off-sets are prohibited for all horses competing in the Ocala Spring Premier. Any rider, trainer, groom, or any other person who is in violation of the rules set forth above will be fined \$500 for each incident and may be suspended from further competition for the duration of the scheduled competition starting from the time of the incident. Any horse upon which a violation of the manual poling and/or use of bamboo off-sets rule is perpetrated will be suspended from competition for the duration of the scheduled competition. All entry fees for the classes entered during the suspended period of the horse in question will be forfeited.

Canadian Exhibitors: Must be current Equestrian Canada (EC) members, gold or platinum, and all fees must be paid by credit card unless they're using US funds.

Formal Attire:

Hunters: Riders are required to wear scarlet or dark coats; white shirts with white stock; white, buff or canary breeches. Members of the Armed Services or the Police may wear the Service Dress Uniform.

Equitation: Riders are required to wear conservatively colored coats (black, blue, green, grey or brown) which are free from adornment which in the judge's opinion is overlydistracting. Shirts must have a choker, similar collar or tie. Breeches may be buff, canary, tan, rust or white.

Jumpers: Dark, muted or similar colored, or red (scarlet) coats are required; team or sponsored coats of different colors are also permitted; white or fawn breeches; a white tie, choker (unless the shirt, by design, has the choker built in for its intended use) or hunting stock, and a white or lightly colored shirt must be worn. Shirts must have a white collar and white cuffs. Shirts must be fastened at the neck and tucked into breeches. Boots are required. Half chaps are permitted as long as the color matches the paddock boots being worn. Members of the Armed Services or the police may wear the service dress uniform with protective headgear. (See General Rules, GR801.2)

Motorized Vehicles/Golf Carts: Under Florida State Laws & USEF Rules unlicensed drivers are not permitted to operate any motorized vehicles, ATV'S, motorcycles, golf carts, etc., on the show grounds. Failure to abide by these regulations will subject

the exhibitor to suspension from the horse show.

USEF GR 1301.7: Minors who do not have a valid driver's license which allows them to operate a motorized vehicle in the state in which they reside will not be permitted to operate a motorized vehicle of any kind, including, but not limited to, golf carts, motorcycles, scooters, or farm utility vehicles, on the competition grounds of licensed competitions. Minors who have a valid temporary license may operate the above described motorized vehicles as long as they are accompanied by an adult with a valid driver's license. The parent(s), legal guardian(s), or individual who signs the entry blank as a parent or guardian of a minor operating a motorized vehicle in violation of this rule are solely responsible for any damages, claims, losses or actions resulting from that operation. Violations of this rule will be cause for sanctions against the parent(s), guardian(s) and/or trainer(s) who are responsible for the child committing the offense. Penalties may include exclusion of the child, parent(s), guardian(s), and/or trainer(s) from the competition grounds for the remainder of the competition and charges being filed against any of the above individuals in accordance with Chapter 6. Wheelchairs and other mobility assistance devices for individuals with disabilities are exempt from this rule.

Motor Homes: Motor homes and camper sites are available but limited. **Please send in a completed camper reservation form. \$275 fee per week.** Includes septic. A \$50 fee will be added if not prepaid by closing date.

Parking: Fire regulations prohibit all vehicles, including trailers, vans and passenger vehicles from being parked in the stable areas. Vans and trailers will be allowed in the stable area only to load or off-load. PARKING AREAS WILL BE DESIGNATED AND VIOLATORS WILL BE TOWED AWAY AT OWNER'S EXPENSE.

Protective Headgear: It is compulsory for all persons at Federation licensed hunter, jumper or hunter/jumper competitions when mounted anywhere on the competition grounds, to wear properly fastened protective headgear which meets or exceeds ASTM (American Society for Testing and Materials)/SEI (Safety Equipment Institute) standards for equestrian

use and carries the SEI tag. It must be properly fitted with harness secured. Exception: In Hunter or Jumper classes, adults may be allowed to remove their headgear while accepting prizes and during the playing of the National Anthem only; they must refasten their headgear prior to the lap of honor. Reference USEF GR 801.2 & 4, HU 128, & EG 105.1.

Minor Exhibitors: Parent(s) or guardian(s) of minor exhibitors shall hold the Horse Show Management and the Facility harmless for any injury to such minor. No child's entry will be accepted or number issued unless entry is signed by a parent or LEGAL guardian. The signature of unrelated persons WILL NOT be accepted.

Dogs: There will be a Zero Tolerance Policy for Loose Dogs. All dogs must be restrained at all times while on the show grounds. Unrestrained dogs create a serious safety hazard for exhibitors and their horses. Keep dogs on a leash for their protection. Loose dogs will not be tolerated in the show ring area. The dogs will be impounded and the owner charged \$100 that will be donated to the Humane Society. The owner of any dog that disrupts a Competitor's round in the ring will be required to reimburse said Competitor for their entry fees including the entire division fee. **USEF GR 1301.6:** Dogs are not permitted to be loose on competition grounds and must be held on a leash or otherwise restrained. Individuals must not lead dogs on a leash while mounted. Dog owners are solely responsible for any damages, claims, losses or actions resulting from their dogs' behaviors. Dog owners failing to comply with this rule will be issued a Yellow warning card may be subject to penalty under Chapters 6 and 7. **DOG OWNERS ARE SOLELY RESPONSIBLE FOR ANY DAMAGES, CLAIMS, LOSSES OR ACTIONS RESULTING FROM THEIR DOGS' BEHAVIORS.**

Prize Money: Prize money will only be awarded to the recipient of record on the entry blank provided there is valid US Social Security number, Federal ID or Tax Identification Number and corresponding name and address. Prize money will be printed at the conclusion of the event. During multiple week events, prize money checks can be picked up in the Horse Show Office on Thursday. Prize money checks will be mailed within 30 days of the conclusion of the event. Please confirm

information on entry form is correct to insure prompt and accurate delivery of prize money. USEF GR: 1210.6

Caveat: Due to uncertainty: • classes with \$25,000 or more require 15 entries; less than 15 the classes may have \$10,000 in prize money with a \$300 entry fee; classes with \$10,000 require 15 entries; less than 15 the class may have \$5,000 in prize money with a \$250 entry fee; • all Hunter Classics with prize money require 6 entries or the classes may be combined or cancelled; • all Jumper Classes with prize money require 5 entries or the class may be cancelled. • JR/AO/AM Jumpers require 6 entries in each class height otherwise the class will run as a JR/AO/AM High Low.

Microchipping: 1) **All Horses and Ponies** competing in classes that require USHJA horse registration must provide a microchip number that verifies their animal's identity. 2) A microchip used to verify identity must be a fifteen-digit ISO compliant 11784/11785 chip and be implanted in the nuchal ligament of the animal.

All Horses and Ponies that are competing in classes which require USHJA registration which are not microchipped **will be ineligible** to compete in Federation licensed competitions. Exceptions: USHJA Outreach and Opportunity Classes.

USEF has provided education materials to competitors to learn more about microchipping and the rules (HU104, JP100, EQ103). Complete Details posted in Horse Show Office. **For more information, visit USEF.org.**

Non-Showing Horses: Non Showing Horses will be charged a non-showing fee of \$50 per horse.

Ticketed Warm-Up: Tickets should be purchased in the horse show office and are good for one round of eight jumps. Tickets are non-refundable.

Paramedic Fee: \$5 per horse. Per USEF HJ 105.3H, all Premier shows must have a paramedic as one of their Qualified Medical Personnels. Unfortunately, paramedics are much more expensive than a very qualified EMT. In order to be in compliance, we are forced to assess a fee to help cover this mandatory rule that went into effect as of 12/1/2019.



Liability: The Classic Company, Florida Horse Park, their officials, and employees will not be responsible for any accident or loss which may occur to any exhibitor, spectator, guest, rider, groom, attendant, other employee, animal, or equipment at any of the competitions. All owners and competitors are personally responsible for damages to third persons caused by themselves, their employees, their agents, their horses, or their dogs. They are therefore strongly advised to take out third party insurance providing full coverage for participation in equestrian events, and to keep that policy up to date.

WARNING: UNDER FLORIDA LAW, AN EQUINE ACTIVITY OR EQUINE SPONSOR IS NOT LIABLE FOR AN INJURY TO OR THE DEATH OF A PARTICIPANT IN EQUINE ACTIVITIES RESULTING FROM THE INHERENT RISKS OF EQUINE ACTIVITIES PURSUANT TO THIS ACT.

Competition Arenas

- Covered Arena (212' x 375') Clay/Sand Footing
- State of the Art Arenas with Martin Collins Clopf Fiber Footing and the innovative Dammann Risohorse Irrigation System. 2 - 250' x 350' and 2 - 140' x 240'
- 2 Grass Arenas: 1 - 300' x 500' and 2 - 250' x 350'
- 350 Acres of manicured grass fields

Address/Telephone:

Florida Horse Park
11008 S Highway 475
Ocala, Florida 34480
(352) 307-6699



For additional information please visit flhorsepark.com and click on map of the park for further details of facility.

The horse show will sign for your package delivered by UPS, FedEx, US Post Office or other overnight carriers but does so as a courtesy. The show or facility will not accept responsibility for the package(s). If the package is valuable, please check with the office each day regarding possible delivery.

Directions: Directions to Florida Horse Park (Exhibitors Entrance)*: Take I-75 South to Exit 341 From Point North East (I-95 from Jacksonville): 484 East. Follow directions based on below. (US HWY 484 in Marion County). Turn Left

off exit on to HWY I-95 to I 295 west to I 10 From Point South West (Wellington): 16th Ave. Horse Park will be on your left.

South of Ocala turn right on SW 107th Place, take next left on SW West. from I-10 take US 301 South. Take 301 south for 100 miles, Take Florida's Turnpike From I-75 (Tampa and points SE): exit. Follow directions based on below. North. Merge on to I-75 at Wildwood. Take exit 341, turn right off Take I-75 North towards Ocala. Stabling Entrance/ Spectator Entrance off SW 16th Ave: Take exit 341, turn right off exit. Follow directions based on below.

ADDITIONAL TERMS AND DEFINITIONS OF THE RELEASE OF LIABILITY, ASSUMPTION OF RISK, WAIVER AND INDEMNIFICATION

In consideration for entry upon the SHOW GROUND FACILITIES of the COMPETITION, the undersigned on behalf of myself, my trainers, instructors, coaches, clients, agents, employees, grooms, invitees, representatives, assigns, executors, heirs, independent contractors (including but not limited to veterinarians, farriers, masseuse, chiropractor, therapists, braiders, shippers), and, if applicable, on behalf of my minor child or children (hereinafter collectively referred to as "I") agrees: I agree that COMPETITION as used in this entry blank, in the prize list and in the USEF rules means Ocala Spring Premier Horse Show, each and every class and/or event conducted and ALL ACTIVITIES that I undertake AT ANY TIME and for any purpose upon entry of the SHOW GROUND FACILITIES including any horse which is on the SHOW GROUND FACILITIES for my use, in my control or at my request. I further agree that COMPETITION includes the entire week of the horse show including the time horses and/or people are allowed to enter to set up, stable and/or conduct business whether its expressly and/or specifically related to the horse show and classes being conducted/held that week through and including the time all horses and/or people vacate the SHOW GROUND FACILITIES. I agree that this Release of Liability includes any horse that I have asked to come onto the SHOW GROUND FACILITIES for any purpose, and/or is in my control and/or custody and regardless whether the horse is being stabled at the SHOW GROUND FACILITIES and/or competing in the COMPETITION. I agree that "RELEASED PARTIES" means the "Competition" known as Ocala Spring Premier

Horse Show, the “Horse Show Management” and/or “Competition Management” as referenced in the prize list, the Federation Licensee, Classic Company, and each of their officers, directors, managers, members, owners, shareholders, employees, representatives, agents, subsidiaries, volunteers, officials, affiliated and associated persons, companies and organizations, assigns and entities or organizations as may now or hereafter be constituted, that own, are related to or manage the property owned by such entities. I agree that SHOW GROUND FACILITIES means the Harrison Equestrian Center including but not limited to all improvements, structures (permanent or temporary), buildings, tents, stalls, fixtures (including but not limited to all jumps and related equipment), arenas (and the footing therein) located on the premises and/or provided by RELEASED PARTIES during the COMPETITION. I agree that if I am not a member of the Federation that I will abide by all rules and regulations of the Federation. I agree that the Rules of the Prize List are incorporated as if set forth herein. Release and Waiver of Claims: I hereby fully and forever release, waive and discharge the RELEASED PARTIES and each of them who are or might be liable in any way from any and all claims, demands, actions, causes of actions, liabilities of any kind which I may or might have against RELEASED PARTIES or any of them, arising from or by reason of any and all known and unknown, foreseen or unforeseen bodily and personal injuries, damage to property, injury to horse and any consequences thereof, which I may sustain due to the ordinary negligence of RELEASED PARTIES; I further agree that except for the gross negligence or willful misconduct of the RELEASED PARTIES, I SHALL NOT SUE or bring any legal action, claim, and/or demand against for any economic and noneconomic losses due to bodily injury, death, property damage and/or injury to any horse in relation to the SHOW GROUND FACILITIES and/or the operation and conduct of the COMPETITION. I agree this RELEASE INCLUDES ALL ACTIVITIES I PARTICIPATE IN AND ALL AREAS OF THE SHOW GROUND FACILITIES as defined above. This release also includes all activities I conduct at the SHOW GROUND FACILITIES and includes all times that I am at the SHOW GROUND FACILITIES no matter what the purpose and/or activity being undertaken.

Hold Harmless: I hereby agree to defend, indemnify and hold harmless RELEASED PARTIES from and against any and all claims, liabilities, loss, damages, demands, actions, causes of action, including attorneys’ fees, cost and expenses of any kind, which may be made against them, or any of them, which arise out of the active or passive negligence of RELEASED PARTIES while either I or any horse at my request or in my control is/was on the SHOW GROUND FACILITIES and/or participating in the COMPETITION. I agree to defend RELEASED PARTIES, at my expense, regardless if RELEASED PARTIES are negligent or not. Assumption of Risk: I hereby acknowledge and assume the risk that equestrian activity, including jumping, is very dangerous and involves the risk of serious injury and/or death and/or property damage. I expressly acknowledge that injuries may be compounded or increased by negligent maintenance of the SHOW GROUND FACILITIES, faulty or improperly secured equipment, improper supervision or compliance with Federation rules and regulations. Acts of God and negligent rescue operations or procedures of RELEASED PARTIES and negligent handling of horses and independent operations by trainers, riders and/or boarders who use the SHOW GROUND FACILITIES or others who are not affiliated with RELEASED PARTIES. I acknowledge that horses can be injured while being ridden, groomed, stabled, walked and/or exercised and I expressly assume the risk of injury to any horse under my control and/or custody or on the SHOW GROUND FACILITIES at my request. This agreement shall be governed by the laws of the State of Mississippi with respect to all RELEASED PARTIES, except for the Federation as set forth on page one. I agree this Release extends to all acts of ordinary negligence of RELEASED PARTIES and is intended to be as broad and inclusive as permitted by law. If any portion of this Release and/or Entry Blank is held invalid, it is agreed that the balance shall continue in full legal force and effect. I have not relied on any oral representations or statements made that are contrary to or modify the above Release or warnings. I agree that by signing the front page of this Entry Blank that I am bound by the Release, waiver and warnings contained herein and that both sides/pages constitute one incorporated agreement. I agree I have the express authority to sign this entry blank/Release on behalf of the owner and/or rider.



CWD
We care. You ride.



2021 BIOSECURITY PROTOCOLS

The Classic Company is dedicated to the health, welfare and safety of all exhibitors both equine and human. To protect our equine partners, we will be enforcing the following protocols at the Ocala Spring Premier.

It is advised that all horses stabling on the Ocala Spring Premier show grounds arrive between 7:00 a.m. and 6:00 p.m. If it is necessary to arrive at any other time you must check in with the night security officer.

1. A current (within 12 months) negative Coggins test is required.
2. A Health Certificate must be signed by a licensed veterinarian within 30 days of arrival at the Ocala Spring Premier Show Grounds.
3. Any horse on the show grounds with a fever of unknown origin or of suspicious origin must be reported to Ocala Spring Premier Show Management and to the Show Veterinarian. It is always better to err on the side safety. Isolation stalls will either be available on the grounds or at a local veterinary practice if the need arises.
4. Please take the time to review equine good hygiene practices. Please convey the importance of this to your equine caretakers for their daily routines. The Classic Company strives to provide a safe and enjoyable show experience. An important part of that experience is maintaining healthy horses.

5. USEF GR845 Equine Vaccination Rule

1. At Federation licensed competitions horses, more than 7 months of age, entering the grounds must be accompanied by documentation of Equine Influenza Virus and Equine Herpes Virus (Rhinopneumonitis) vaccinations within six months prior to entering the stables. Horses not in compliance with this rule may be required to leave the competition grounds upon request by Competition Management. Documentation should consist of one of the

following methods mentioned below. The frequency of vaccine administration should be per the vaccine manufacturers' or veterinarian's recommendations. It is recommended that vaccines are administered by or under the direction of a veterinarian.

2. In the case of vaccines administered by a veterinarian, the exhibitor, upon request by Competition Management, must provide documentation from the veterinarian on documenting that the horse in question received the vaccinations; name of the vaccines and date of vaccine administration.
3. In the case of vaccines administered by a person other than a veterinarian, the exhibitor, upon request by Competition Management, must provide a receipt of the vaccine purchase which is signed by the owner, or agent with care, custody, and control of the horse; name, serial number and expiration date of the vaccine; and date of vaccine administration.
4. In the case of a horse that is unable to receive either of the vaccinations due to a history of adverse reactions, the exhibitor, upon request by Competition Management, must provide a letter from the veterinarian on official letterhead stating that the horse in question cannot be vaccinated due to medical concerns and a log of temperatures taken twice daily for the seven days prior to entering the competition grounds. These horses must also have their temperature taken and logged twice daily while on the competition grounds. The log of temperatures should be provided to the Competition Management, steward, or technical delegate when requested.
5. Competition Management may not amend or enhance vaccination requirements without prior approval of the Veterinary Committee.

Thank You for Choosing to Show with the Classic Company!





Don't just stand there!

**Order your subscription
to Sidelines today!**

SIDELINES



SIDELINES IS DEVOTED TO THE PEOPLE AND PERSONALITIES THAT MAKE THE HORSE WORLD EXCITING.



Created by equine professionals to meet the demands & unique risks of equestrians.

As an employee-owned company, our pride in ownership drives us to be an insurance agency unlike any other.

**Marshall
& Sterling**
INSURANCE
EQUISPORT DIVISION

www.MarshallSterling.com/Equisport

12798 West Forest Hill Blvd., Suite 102 Wellington, FL 33414 • Tel: 800-836-3046 • Fax: 561-557-5305



ANDREW RYBACK P H O T O G R A P H Y

OFFICIAL HORSE SHOW PHOTOGRAPHER

PHOTOGRAPHING ALL OVER-FENCES ROUNDS IN ALL RINGS

COME VISIT OUR LOCATION ONSITE TO VIEW & PURCHASE YOUR PHOTOS

OR VISIT US ONLINE AT WWW.ANDREWRYBACK.COM

DIGITAL PHOTOS
HIGH QUALITY PRINTS
FULL SHOW PACKAGES

UNIQUE GIFTS
SPECIALTY ITEMS
PORTRAIT SESSIONS



NOW is the TIME

TO PUT YOUR TRUST IN EMO

Top-rated underwriters with time-tested products...providing excellent service for more than 30 years.



National 800-347-3552 • West Coast 818-848-0443
www.RIDEEMO.com

Worldwide Coverage:

EQUINE • FARM OWNERS • AUTO



Receive **30% Off** Renovated Rooms When You Mention This Ad!

Less than 20 minutes Florida Horse Park

Located right off I-10 at exit 350, The Equus Inn is located less than 20 minutes from the Ocala Spring Classic hosted at Florida Horse Park. Completely renovated rooms & lobby:

- Self-Serve Beer & Wine Bar
- Marble & Stone Shower
- Bath & Body Works Shower Products
- 43" TV
- Plantation-Style Shutters
- USB Charging Alarms
- State-of-the-Art Virtually Soundless A/C
- Heated Outdoor Pool
- Fully Equipped Gym
- Free Breakfast Every Morning

**CALL 352-854-3200
TO BOOK OFFER**

We're offering a special Spring Classic rate of **30% Off** our **double queen and king rooms!** Book Now for March 21 – April 1st!

Resort-Style Hotel in the Heart of Horse Country

ASK FOR THE
FLORIDA HORSE
PARK RATE



- Conveniently located at I-75 and SR200
- Full service hotel with restaurant and lounge
- Easy free parking for cars, trucks, trailers and RV's
- Pet friendly
- Indoor fitness center, outdoor equipment and trail, and pool

Hilton
OCALA

You will love our chic contemporary style, outdoor areas to unwind, and award-winning dining at the Market Kitchen & Bar.



HILTON OCALA

3600 SW 36th Avenue | Ocala, FL 34474 | 352.854.1400 | HiltonOcala.com

*Your Horse's
Confidence, Comfort & Performance
is Our Passion.*



PERFECTPRODUCTS

The Makers of Perfect Prep™

PROUD SPONSOR OF CLASSIC COMPANY SHOWS

PERFECTPRODUCTSEQ.COM

COURTYARD[®]

BY MARRIOTT

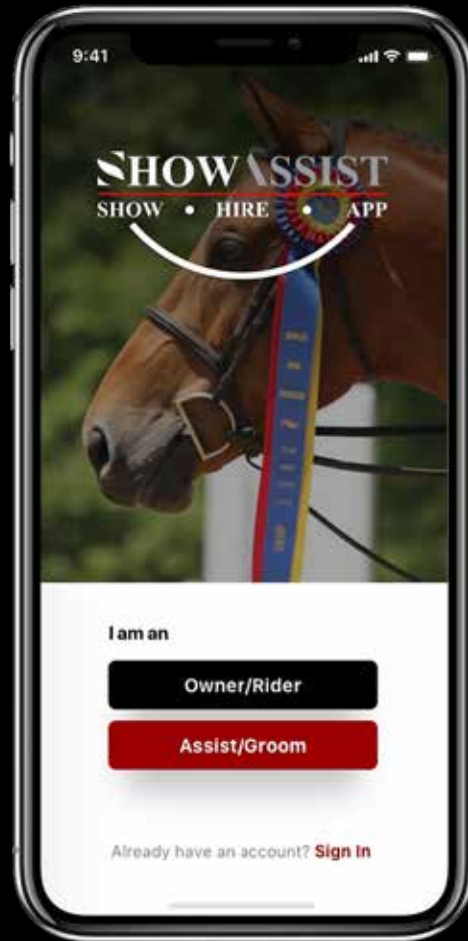
3712 SW Avenue
Ocala, FL 34474
(352) 237-8000



The Courtyard Ocala is located near I-75 with easy access to the Florida Horse Park and local restaurants and shopping. The Courtyard Ocala makes your stay effortless. Use the link at ClassicCompany.com for room reservations or call. Enjoy Free High Speed Internet, Free Breakfast, Fitness Center and Pool. Horse show rates for the Ocala Spring Classic start at \$79.

SHOW ASSIST

SHOW • HIRE • APP



PEOPLE-CENTERED. SHOW-DRIVEN.

ShowAssist is an on-demand hiring mobile app that connects owners, trainers and riders to experienced grooms, braiders, bodyworkers, stall cleaners and other support staff to provide temporary assistance while at rated USEF and Equestrian Canada shows.

It is free to post jobs and to apply!

Download today!



SHOWASSIST.ORG

Ocala Spring Premier | Ocala, Florida

NO PHONE RESERVATIONS

Each camper must have a reservation form sent to the office and be pre-paid either by credit card or check in order to secure a camper spot. Campers without reservations could be parked off the grounds and/or without power and water.

Campers not reserved prior to arrival are subject to a \$50 late fee.

Each reservation will be assigned a camper pass and can be picked up at the horse show office. This pass must be displayed in your camper at all times.

Name of Owner: _____

Credit Card: _____ - _____ - _____ - _____

Exp. Date: ____/____/____ CID and Card Security#: _____

Billing Address (if using credit card): _____

City/State: _____ Zipcode: _____

Phone: _____

Arrival Date: ____/____/____ Manufacturer: _____

Trainer: _____

Trainer's Address: _____

Email: _____

Phone: _____

Cost: \$275

Length of RV: _____ feet Check One*: ☐ 30 amps ☐ 50 amps

**There are limited numbers of 50 amp plugs. We will try to provide the power requested but all campers should be prepared if the spot assigned does not have requested power.*

Return form to:

Email jonathan@horseshowservices.com
to reserve a limited camper space.

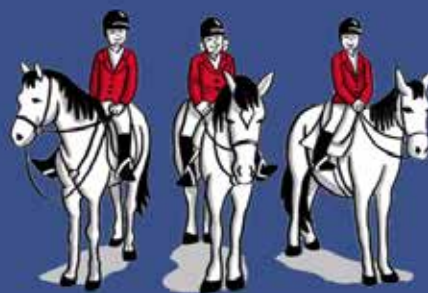


The **2021 Ocala Spring Premier** are operated in accordance with the current rules of the USEF of which body it is a Regular Member Competition and is **A Rated:** Green Hunter, High Performance Hunter, Green Conformation Hunter, Regular Conformation Hunter, Amateur Owner Hunter, Junior Hunter, Pony Hunter, Green Pony Hunter
C Rated: Adult Amateur Hunter, Children's Hunter, Children's Hunter Pony, TB Hunter

FINALLY, THE INSURANCE YOU NEED AT A PRICE YOU CAN AFFORD



HEALTH & INSURANCE BENEFITS



Now with just a few clicks, you can purchase the valuable coverage you and your family need.

You deserve the peace of mind that comes with having affordable, easy-to-understand benefits for you and your family. Now with your paid-fan or competing **USEF Membership**, you can sign up for a range of benefits from well-known, established insurance companies, with savings up to 35% or more!

You Can Get Coverage For...



Individual/
Family Health
Insurance



Teledoc



Global Health
Insurance



Personal Liability,
Death & Disability
Insurance



Group Health
Insurance



Free Mental
Health First Aid



Ground & Air
Ambulance



Financial
Lock



Dental, Vision, Disability, Accident,
Critical Illness, and Life Insurance



Farm, Equine, & Pet Insurance



These benefits can be customized for individuals, families, business owners, executives, and your employees

Visit **USEF.org/insurance** to learn more and find your rate today.
Or call us at **(800) 349-1082** to speak with your USEF benefits team.

