

**June 12-16, 2024 | June 18-23, 2024**

**USEF National Hunters | USEF Level 4 Jumpers  
\$25,000 Grand Prix**

**\$7,500 Welcome Class | \$10,000 Hunter Classic**

**\$5,000 USHJA Pony Hunter Derby Championships - East (June 18)**

**M & S \$5,000 Classic Hunter Derby | \$1,000 Green Hunter Incentives**



**\$25,000 Marshall & Sterling Classic Hunter Derby**



**classiccompany.com  
843-768-5503**



## Dear Competitors and Trainers,

We hope you will join us for the 5th annual Aiken Summer Classic at Bruce's Field -- June 12-23, 2024. Two weeks of USEF National horse shows filled with special classes and events.

### Week One - June 12-16, 2024

- \$5,000 Marshall & Sterling Classic Hunter Derby
- \$10,000 Open Hunter Classic
- \$7,500 Welcome Class
- \$25,000 Grand Prix



### Week Two - June 18-23, 2024

- \$25,000 Marshall & Sterling Classic Hunter Derby
- \$7,500 Welcome Class
- \$25,000 Grand Prix
- \$5,000 USHJA Pony Hunter Derby Championships - East

This will be an exciting two weeks in the heart of horse country in Aiken, and we look forward to having you join us. Stalls and RV hookups are limited. Please let us know your preferences as soon as possible to confirm stabling. Sponsors and those competing both weeks will have priority stabling and will be assigned on a first come-first served basis.

See you at the ring!

Bob Bell  
President, Classic Company, Ltd.



P.O. Box 1311 | Johns Island, South Carolina 29457  
843-768-5503 | [info@classiccompany.com](mailto:info@classiccompany.com)  
[classiccompany.com](http://classiccompany.com)



**AIKEN SUMMER CLASSIC I****JUNE 12-16, 2024 | USEF #262204****Hunter Judges:** Melissa Bark, Alice Coke, Chris Wynne**Jumper Judge:** Mike Lowry**Stewards:** Mary Choate, Cathy Cortright, Kelly Covey**Course Designers:** Paul Jewell (Hunters) | Allen Rheinheimer (Jumpers)**AIKEN SUMMER CLASSIC II****JUNE 18-23, 2024 | USEF #313878****Hunter Judges:** Cathy Cortright, Kim Dorfman, Mary Eufemia, Scott Fitton**Jumper Judge:** Mike Lowry**Stewards:** Mary Choate, Donna Urban**Course Designers:** Paul Jewell (Hunters) | Michel Vaillancourt (Jumpers)**RECOGNIZED BY**

USEF National Rated/USEF Jumper Level 4 | Georgia Hunter Jumper Association

North Carolina Hunter Jumper Association | South Carolina Hunter Jumper Association

Middle Tennessee Hunter Jumper Association | West Tennessee Hunter Jumper Association

North American League (NAL) | WIHS Hunter Jumper Classic

**Manager** | Bob Bell**Technical Director** | Allen Rheinheimer**Show Office Manager** | Jonathan Rabon**Secretaries** | Valerie Beyer, Justin Bowles,  
Cathy Cortright**Announcer** | Jane Labyack**Veterinarian** | Dr. Patrick Cleveland (228-493-0231)**Farrier** | Max Feldman**Schooling Supervisor** | Robin Macpherson**Stabling & Camper Reservations** | Order and change online at [classiccompany.com](http://classiccompany.com) or text questions to 843-729-2818.**Photographer** | Eye Was Here Photography**Sponsor Coordinator** | Lisa Engel  
(908-310-6248)**Trophies & Ribbons** | Robin Macpherson**Hospitality Coordinator** | Robin Macpherson**Public Relations** | Lisa Engel (908-310-6248)

To reduce paperwork and streamline office work, all entries must be done on **HorseShowsOnline.com** for the Aiken Summer Classic. For adds/scratches, schedules, orders and online bill paying please go to **mobile.horshowsonline.com**.

*These shows are produced by the Classic Company, Ltd., Johns Island, SC - Bob Bell, President*

## GRAND HUNTER CHAMPION

### The James Vaughn Perpetual Trophy

Awarded to the Green, Conformation, Performance, Amateur or Junior Hunter with fences 3'6" or greater. Model points not to count. *Donated by Robbie Hunt and the Classic Company, Ltd.*

## GRAND CLASSIC DERBY CHAMPION

### The Kiara Barnette Memorial Trophy

Awarded to the Horse and Rider with the most overall points in the Classic Derby. *Donated by Donna Moeckel*

## GRAND AMATEUR HUNTER 3'6" CHAMPION

### The Seabrook Perpetual Trophy

Awarded to the Amateur Hunter 3'6" with the most championship points in the Amateur Divisions. *Donated by Mr. and Mrs. John Horton of Seabrook Island*

## GRAND LARGE JUNIOR HUNTER 3'6" CHAMPION

### The Hummel Perpetual Trophy

Awarded to the Large Junior Hunter 3'6" with the most championship points in the Junior Hunter Divisions. *Donated by Oak River Farm and the Principe Family*

## GRAND JUNIOR HUNTER 3'3"

### The Rave Perpetual Trophy

Awarded to the Junior Hunter 3'3" with the most championship points in the Large Junior Hunter Divisions. *Donated by the Ueltzen Family*

## GRAND SMALL JUNIOR HUNTER 3'6"

### Sweet Surprise Perpetual Trophy

Awarded to the Small Junior Hunter 3'6" with the most championship points in the Small Junior Hunter Divisions. *Donated by Brad Spragg and Atlanta Hunt Club*

## GRAND PONY CHAMPION

### The Keith R. Nichols Memorial Perpetual Trophy

Awarded to the Pony with the most championship points in the Small, Medium, Large or Green Pony Divisions. *Donated by Robin R. Stoney and Mary Allison Mullis*

## GRAND CHILDREN'S HUNTER CHAMPION

### The Trick or Treat Memorial Trophy

Awarded to the Children's Hunter with the most championship points in the Children's Hunter Divisions. *Donated by Danny Robertshaw*

## GRAND ADULT AMATEUR HUNTER CHAMPION

### The Hillbright Farm Trophy

Awarded to the Adult Amateur Hunter with the most championship points in the Adult Amateur Hunter Divisions. *Donated by Hill Bright Farm*

## GRAND HIGH PERFORMANCE HUNTER CHAMPION

### The Marie Reynolds Memorial Perpetual Trophy

Awarded to the High Performance Hunter with the most championship points in the High Performance Hunter Divisions. *Donated by Bob Bell*

## GRAND CONFORMATION HUNTER CHAMPION

### The Arc De Triomphe Perpetual Trophy

Awarded to the Green Conformation Hunter with the most championship points in the Green Conformation Hunter Divisions. *Donated by Bob Bell and the Homestead Horse Show*

## GRAND GREEN HUNTER 3'6" - 3'9" CHAMPION

### The Sit-Down Perpetual Trophy

Awarded to Green Hunter 3'6" - 3'9" with the most championship points in the Green Hunter Divisions. *Donated by Peter Pletcher and PJP Farms*

## GRAND GREEN CHAMPION

### The Beverly Finkle Memorial Trophy

Awarded to the 3' & 3'3" Green Horse with the most championship points in the Green Divisions. *Donated by Robin Degnan*

## GRAND A/O HUNTER 3'3" CHAMPION

### The Tormoline Memorial Perpetual Trophy

Awarded to the A/O Hunter with the most championship points in the A/O Hunter 3'3" Divisions. *Donated by the Coster Family*

## GRAND JR/AM JUMPER 1.10M CHAMPION

### The St. Charles Place Perpetual Trophy

Awarded to the horse with the most points in the JR/AM Jumper Division. *Donated by Lynn Seithel*



All Hunter Classes are held in accordance with USEF RULES and USHJA Zone 4 Specifications.

## USEF RATED HUNTER DIVISIONS

### PERFORMANCE HUNTERS

#### High Performance Hunter

**Division Entry Fee:** \$270 | **Class Entry Fee:** \$80  
**Prize Money:** \$300 per Class | **Fence Height:** 4'-4'6"  
**Class Numbers:** 1, 2, 3 High Performance Hunter |  
 4 Handy Hunter | 5 Under Saddle

#### Performance Hunter 3'6"

**Division Entry Fee:** \$250 | **Class Entry Fee:** \$70  
**Prize Money:** \$200 per Class | **Fence Height:** 3'6"  
**Class Numbers:** 6, 7, 8 Performance Hunter |  
 9 Handy Hunter | 10 Under Saddle

#### Performance Hunter 3'3"

**Division Entry Fee:** \$250 | **Class Entry Fee:** \$60  
**Prize Money:** \$200 per Class | **Fence Height:** 3'3"  
**Class Numbers:** 11, 12, 13 Performance Hunter |  
 14 Handy Hunter | 15 Under Saddle

### GREEN HUNTERS

#### Green Hunter 3'9"

**Division Entry Fee:** \$250  
**Prize Money:** \$200 per Class | **Fence Height:** 3'9"  
**Class Numbers:** 16, 17, 18 Green Hunter |  
 19 Handy Hunter | 20 Under Saddle

#### Green Hunter 3'6"

**Division Entry Fee:** \$250  
**Prize Money:** \$200 per Class | **Fence Height:** 3'6"  
**Class Numbers:** 21, 22, 23 Green Hunter |  
 24 Handy Hunter | 25 Under Saddle

#### Sidelines Green Hunter 3'3"

**Division Entry Fee:** \$250  
**Prize Money:** \$200 per Class | **Fence Height:** 3'3"  
**Class Numbers:** 26, 27 (1st Classic Round) |  
 28, 29 Green Hunter | 30 Under Saddle

#### Sidelines Green Hunter 3'

**Division Entry Fee:** \$250  
**Prize Money:** \$200 per Class | **Fence Height:** 3'  
**Class Numbers:** 31, 32 (1st Classic Round) |  
 33, 34 Green Hunter | 35 Under Saddle

### CONFORMATION HUNTERS

#### High Performance Conformation Hunter

**Division Entry Fee:** \$250 | **Model Fee:** \$25  
**Prize Money:** \$200 per Class | **Fence Height:** 3'9"  
**Class Numbers:** 36, 37, 38 HP Conformation Hunter |  
 39 Handy Hunter | 40 Under Saddle | 850 Model

#### Green Conformation Hunter

**Division Entry Fee:** \$250 | **Model Fee:** \$25  
**Prize Money:** \$200 per Class | **Fence Height:** 3'6"  
**Class Numbers:** 41, 42, 43 Green Conformation  
 Hunter | 44 Handy Hunter | 45 Under Saddle |  
 851 Model

### AMATEUR OWNER HUNTERS

#### Amateur Owner Hunter 3'6" 18-35

**Division Entry Fee:** \$250  
**Prize Money:** \$200 per Class | **Fence Height:** 3'6"  
**Class Numbers:** 46, 47 (1st Classic Round) | 48 Amateur  
 Owner Hunter | 49 Handy Hunter | 50 Under Saddle

#### Amateur Owner Hunter 3'6" 36 & Over

**Division Entry Fee:** \$250  
**Prize Money:** \$200 per Class | **Fence Height:** 3'6"  
**Class Numbers:** 51, 52 (1st Classic Round) | 53 Amateur  
 Owner Hunter | 54 Handy Hunter | 55 Under Saddle

#### Amateur Owner Hunter 3'3" 18-35

**Division Entry Fee:** \$250  
**Prize Money:** \$200 per Class | **Fence Height:** 3'3"  
**Class Numbers:** 56, 57 (1st Classic Round) | 58 Amateur  
 Owner Hunter | 59 Handy Hunter | 60 Under Saddle

#### Amateur Owner Hunter 3'3" 36 & Over

**Division Entry Fee:** \$250  
**Prize Money:** \$200 per Class | **Fence Height:** 3'3"  
**Class Numbers:** 61, 62 (1st Classic Round) | 63 Amateur  
 Owner Hunter | 64 Handy Hunter | 65 Under Saddle



**JUNIOR HUNTERS****Small Junior Hunter 15 & Under****Division Entry Fee:** \$250**Prize Money:** \$200 per Class | **Fence Height:** 3'6"**Class Numbers:** 66, 67 (1st Classic Round) | 68 Small Junior Hunter | 69 Handy Hunter | 70 Under Saddle**Small Junior Hunter 16 & 17****Division Entry Fee:** \$250**Prize Money:** \$200 per Class | **Fence Height:** 3'6"**Class Numbers:** 71, 72 (1st Classic Round) | 73 Small Junior Hunter | 74 Handy Hunter | 75 Under Saddle**Large Junior Hunter 15 & Under****Division Entry Fee:** \$250**Prize Money:** \$200 per Class | **Fence Height:** 3'6"**Class Numbers:** 76, 77 (1st Classic Round) | 78 Large Junior Hunter | 79 Handy Hunter | 80 Under Saddle**Large Junior Hunter 16 & 17****Division Entry Fee:** \$250**Prize Money:** \$200 per Class | **Fence Height:** 3'6"**Class Numbers:** 81, 82 (1st Classic Round) | 83 Large Junior Hunter | 84 Handy Hunter | 85 Under Saddle**Small Junior Hunter 3'3"****Division Entry Fee:** \$250**Prize Money:** \$200 per Class | **Fence Height:** 3'3"**Class Numbers:** 86, 87 (1st Classic Round) | 88 Small Junior Hunter | 89 Handy Hunter | 90 Under Saddle**Large Junior Hunter 3'3"****Division Entry Fee:** \$250**Prize Money:** \$200 per Class | **Fence Height:** 3'3"**Class Numbers:** 91, 92 (1st Classic Round) | 93 Large Junior Hunter | 94 Handy Hunter | 95 Under Saddle**PONY HUNTERS****Small Pony Hunter****Division Entry Fee:** \$250 | **Model Fee:** \$25**Prize Money:** \$200 per Class | **Fence Height:** 2'3"**Class Numbers:** 96 (Conformation) | 97 (1st Classic Round) | 98 Pony Hunter | 99 Handy Hunter | 100 Under Saddle | 860 Model**Medium Pony Hunter****Division Entry Fee:** \$250 | **Model Fee:** \$25**Prize Money:** \$200 per Class | **Fence Height:** 2'6"**Class Numbers:** 101 (Conformation) | 102 (1st Classic Round) | 103 Pony Hunter | 104 Handy Hunter | 105 Under Saddle | 861 Model**Large Pony Hunter****Division Entry Fee:** \$250 | **Model Fee:** \$25**Prize Money:** \$200 per Class | **Fence Height:** 2'9"**Class Numbers:** 106 (Conformation) | 107 (1st Classic Round) | 108 Pony Hunter | 109 Handy Hunter | 110 Under Saddle | 862 Model**GREEN PONY HUNTERS****Small Green Pony Hunter****Division Entry Fee:** \$250 | **Model Fee:** \$25**Prize Money:** \$200 per Class | **Fence Height:** 2'3"**Class Numbers:** 111 (Conformation) | 112 (1st Classic Round) | 113, 114 Green Pony Hunter | 115 Under Saddle | 863 Model**Medium Green Pony Hunter****Division Entry Fee:** \$250 | **Model Fee:** \$25**Prize Money:** \$200 per Class | **Fence Height:** 2'6"**Class Numbers:** 116 (Conformation) | 117 (1st Classic Round) | 118, 119 Green Pony Hunter | 120 Under Saddle | 864 Model**Large Green Pony Hunter****Division Entry Fee:** \$250 | **Model Fee:** \$25**Prize Money:** \$200 per Class | **Fence Height:** 2'9"**Class Numbers:** 121 (Conformation) | 122 (1st Classic Round) | 123, 124 Green Pony Hunter | 125 Under Saddle | 865 Model

**USEF RATED DIVISIONS****Adult Amateur Hunter 18-35***presented by Perfect Products*

**Division Entry Fee:** \$225 | **Class Fee:** \$50  
**Prize Money:** \$100 per Class | **Fence Height:** 3'  
**Class Numbers:** 151, 152 (1st Classic Round) |  
 153, 154 AA Hunter | 155 Under Saddle

**Adult Amateur Hunter 36-49***presented by Perfect Products*

**Division Entry Fee:** \$225 | **Class Fee:** \$50  
**Prize Money:** \$100 per Class | **Fence Height:** 3'  
**Class Numbers:** 156, 157 (1st Classic Round) |  
 158, 159 AA Hunter | 160 Under Saddle

**Adult Amateur Hunter 50 & Over***presented by Perfect Products*

**Division Entry Fee:** \$225 | **Class Fee:** \$50  
**Prize Money:** \$100 per Class | **Fence Height:** 3'  
**Class Numbers:** 161, 162 (1st Classic Round) |  
 163, 164 AA Hunter | 165 Under Saddle

**Children's Hunter 14 & Under**

**Division Entry Fee:** \$225 | **Class Fee:** \$50  
**Prize Money:** \$100 per Class | **Fence Height:** 3'  
**Class Numbers:** 166, 167 (1st Classic Round) |  
 168, 169 Children's Hunter | 170 Under Saddle

**Children's Hunter 15-17**

**Division Entry Fee:** \$225 | **Class Fee:** \$50  
**Prize Money:** \$100 per Class | **Fence Height:** 3'  
**Class Numbers:** 171, 172 (1st Classic Round) |  
 173, 174 Children's Hunter | 175 Under Saddle

**Children's Hunter Pony**

**Division Entry Fee:** \$190 | **Class Fee:** \$45  
**Fence Height:** 2' & 2'6"  
**Class Numbers:** 176, 177 (1st Classic Round) |  
 178, 179 Children's Pony Hunter | 180 Under Saddle

**Low Children's Hunter***See Zone 4 specs.*

**Division Entry Fee:** \$200 | **Class Fee:** \$45  
**Fence Height:** 2'6"  
**Class Numbers:** 201, 202 (1st Classic Round) |  
 203, 204 Children's Hunter | 205 Under Saddle

**Low Adult Hunter***See Zone 4 specs.*

**Division Entry Fee:** \$200 | **Class Fee:** \$45  
**Fence Height:** 2'6"  
**Class Numbers:** 206, 207 (1st Classic Round) |  
 208, 209 Adult Hunter | 210 Under Saddle

**USHJA HUNTER****USHJA Hunter 3'**

**Division Fee:** \$135 | **Class Fee:** \$45  
**Fence Height:** 3'  
**Class Numbers:** 186, 187 USHJA Hunter 3' |  
 188 Under Saddle

**USHJA Hunter 2'9"**

**Division Fee:** \$135 | **Class Fee:** \$45  
**Fence Height:** 2'9"  
**Class Numbers:** 189, 190 USHJA Hunter 2'9" |  
 191 Under Saddle

**USHJA Hunter 2'6"**

**Division Fee:** \$135 | **Class Fee:** \$45  
**Fence Height:** 2'6"  
**Class Numbers:** 192, 193 USHJA Hunter 2'6" |  
 194 Under Saddle

**USHJA Hunter 2'3"**

**Division Fee:** \$135 | **Class Fee:** \$45  
**Fence Height:** 2'3"  
**Class Numbers:** 195, 196 USHJA Hunter 2'3" |  
 197 Under Saddle

**USHJA Hunter 2'**

**Division Fee:** \$135 | **Class Fee:** \$45  
**Fence Height:** 2'  
**Class Numbers:** 198, 199 USHJA Hunter 2' |  
 200 Under Saddle

**HUNTER PRIZE MONEY BREAKDOWN**

Hunter Prize Money awarded according to USEF HU112.7 per class breakdown.

**\$300 Class Prize Money:** \$90, \$66, \$45, \$36, \$33, \$30**\$240 Class Prize Money:** \$73, \$53, \$36, \$28, \$26, \$24**\$200 Class Prize Money:** \$60, \$44, \$30, \$24, \$22, \$20**\$160 Class Prize Money:** \$48, \$35, \$24, \$19, \$18, \$16**\$100 Class Prize Money:** \$30, \$22, \$15, \$12, \$11, \$10

**UNRATED HUNTER DIVISIONS****Short/Long Stirrup Hunter**

Open to all Adult & Junior Riders. Riders may not cross enter into any classes with Fence heights higher than 2'6".

Exception: 11 & Under Equitation

**Division Entry Fee:** \$190 | **Class Fee:** \$45

**Fence Height:** 2'

**Class Numbers:** 211, 212 (1st Classic Round) | 218, 214 S/L Stirrup Hunter | 215 Under Saddle

**Baby Green Hunter**

Open to all Horses & Ponies that have not shown over Fences higher than 3'3".

**Division Entry Fee:** \$200 | **Class Fee:** \$45

**Fence Height:** 2'6"

**Class Numbers:** 216, 217 (1st Classic Round) | 218, 219 Baby Green Hunter | 220 Under Saddle

**2'6" Special Hunter**

**Division Entry Fee:** \$125 | **Class Fee:** \$45

**Fence Height:** 2'6"

**Class Numbers:** 221, 222 Special Hunter | 223 Under Saddle

**2'9" Special Hunter**

**Division Entry Fee:** \$125 | **Class Fee:** \$45

**Fence Height:** 2'9"

**Class Numbers:** 225, 226 Special Hunter | 227 Under Saddle

**Special Hunter 3'**

**Division Entry Fee:** \$125 | **Class Fee:** \$45

**Fence Height:** 3'

**Class Numbers:** 228, 229 Special Hunter | 230 Under Saddle

**BLUE/RED RIBBON HUNTER CLASSES**

**Class Fee for all Blue/Red Ribbon Classes: \$45**

**3'3" Non-Pro Hunter**

**Fence Height:** 3'3" | **Class Numbers:** 251, 252

**3' Non-Pro Hunter**

**Fence Height:** 3' | **Class Numbers:** 257, 258

**2'9" Non-Pro Hunter**

**Fence Height:** 2'9" | **Class Numbers:** 253, 254, 255, 256

**2'3" Non-Pro Hunter**

**Fence Height:** 2'3" | **Class Numbers:** 259, 260

**2' Non-Pro Hunter**

**Fence Height:** 2' | **Class Numbers:** 261, 262

**Schooling Pony Hunter**

**Fence Height:** 2'3", 2'6", 2'9" | **Class Numbers:** 263, 264

**Open Hunter Prep**

**Fence Height:** Height will move with division heights.

**Class Numbers:** 275, 276, 277, 278

**Non-Pro Hunter Prep**

**Fence Height:** Height will move with division heights.

**Class Numbers:** 280, 281, 282, 283



## For Classic Company Events Sponsorship and Advertising Opportunities

**please contact:**

**Lisa Davis Engel, Sponsor Sales & Public Relations Director**  
908-310-6248 [lisa@classiccompany.com](mailto:lisa@classiccompany.com)





## EQUITATION & MEDAL CLASSES

All Equitation Classes are held in accordance with USEF Rules and USHJA Zone 4 Specifications.

**Equitation Classes Entry Fee: \$45 per class**

### 11 & Under Equitation Over Fences

**Fence Height: 2'3" | Class Number: 401**

### 11 & Under Equitation Flat

**Class Number: 402**

### 12 - 14 Equitation Over Fences

**Fence Height: 3' | Class Number: 403**

### 12 - 14 Equitation Flat

**Class Number: 404**

### 15 - 17 Equitation Over Fences

**Fence Height: 3'6" | Class Number: 405**

### 15 - 17 Equitation Flat

**Class Number: 406**

### 2'6" Children's Equitation Over Fences

**Fence Height: 2'6" | Class Number: 407**

### 2'6" Children's Equitation Flat

**Class Number: 408**

*Classes 407 & 408 are open to Child Riders that have not Jumped higher than 2'9" at the same show.*

### 2'6" Adult Equitation Over Fences

**Fence Height: 2'6" | Class Number: 409**

### 2'6" Adult Equitation Flat

**Class Number: 410**

*Classes 409 & 410 are open to Adult Riders that have not Jumped higher than 2'9" at the same show.*

### Short/Long Stirrup Equitation Over Fences

**Fence Height: 2' | Class Number: 411**

### Short/Long Stirrup Equitation Flat

**Class Number: 412**

### Equitation Medal Classes Entry Fee: \$50 per class\*

**\*\$60 for Classes 430, 431, and 439.**

### USEF/Dover Saddlery Hunt Seat Medal

**Fence Height: 3'6" | Class Number: 430**

### Marshall & Sterling/USEF Pony Medal

**Fence Heights: 2'3", 2'6", 2'9" | Class Number: 431**

### ASPCA

**Fence Height: 3'6" | Class Number: 435**

### WIHS Pony

**Fence Heights: 2'3", 2'6", 2'9" | Class Number: 436**

### WIHS Hunter

**Fence Height: 3'6" | Class Number: 437**

### WIHS Jumper

**Fence Height: 3'6" | Class Number: 438**

### Platinum Performance USEF Show Jumping Talent Search 1\*

**Fence Height: 1.10m – 1.15m (3'6"-3'9")**

**Class Number: 439**

### EMO/USHJA Jumping Seat Medal

**Fence Height: 3'3" | Class Number: 440**

### Ariat Adult Medal

**Fence Height: 3' | Class Number: 441**

### Taylor Harris Insurance Services Children's Medal

**Fence Height: 3' | Class Number: 442**

### Classic Company 2'6" Children's Medal

**Fence Height: 2'6" | Class Number: 444**

*Class 444 is open to Child Riders that have not jumped higher than 2'9" at the same show.*

### Classic Company 2'6" Adult Medal

**Fence Height: 2'6" | Class Number: 445**

*Class 445 is open to Adult Riders that have not jumped higher than 2'9" at the same show.*

### Mini Medal

**Fence Height: 3' | Class Number: 446**

### Mini Maclay

**Fence Height: 3' | Class Number: 447**

### SCHJA Medal

**Fence Height: 3' | Class Number: 448**

### EJ Haun

**Fence Heights: 3'3" & 3'6" | Class Number: 449**

### USHJA Hunter Seat Medal

**Fence Height: 3'3" | Class Number: 450**

### SE Medal Finals

**Fence Height: 3' | Class Number: 451**

### USEF NCEA Medal

**Fence Height: 3'3" | Class Number: 452**



## OPPORTUNITY DIVISIONS

*Opportunity Riders may only ride in the Opportunity Divisions.*

### Trot Poles Division

**Division Entry Fee:** \$165 | **Class Fee:** \$45

**Fence Height:** 18"

**Class Numbers:** 901, 902, 903, 904, Trot Poles, 905 Under Saddle

### Canter Division

**Division Entry Fee:** \$165 | **Class Fee:** \$45

**Fence Height:** 18"

**Class Numbers:** 906, 907, 908, 909, Canter, Cross Rails, 910 Under Saddle

### Walk/Trot Equitation Flat

**Entry Fee:** \$45 | **Class Number:** 912

### Walk/Trot/Canter Equitation Flat

**Entry Fee:** \$45 | **Class Number:** 914

## MISCELLANEOUS CLASSES

**Leadline Class** | **No Entry Fee** | **Class Number:** 801

## JUMPER DIVISIONS

**All Jumper Divisions will be held in accordance with USEF Rules and Zone 4 Specifications.**

**Declarations:** Declarations must be made on the appropriate form in the show office the day before the class is to be held and by 5:00 p.m. or one hour after the last jumper class, whichever is later. Untimely declarations will be required to jump first in the order.

**Ties:** All ties involving first place shall be jumped off. Ties for other than first place shall be decided by time taken in the first round.

**Order of Go:** Order of Go will be posted at the in-gate of the Jumper Ring at least one hour prior to the class. Jump order will be drawn for all classes with \$5,000 or more in prize money.

**Awards:** Trophy and Ribbons 1-8

**Championships:** Championships in the JR/AM (1.25-1.35m) divisions will be calculated by points won in the two division classes and classes tied for first place will be broken by classic score. In the JR/AM (.85-1.10m) & Pony divisions all three classes will count equally.

**No Nomination Fee required.**

**Class Entry Fee: \$50 per class - classes 501-532**

### Training Jumper 0.85m

**Fence Height:** 0.85m | Clean Round/Blue Ribbon

**Class Numbers:** 501, 502, 503

### Training Jumper 0.95m

**Fence Height:** 0.95m | Clean Round/Blue Ribbon

**Class Numbers:** 504, 505, 506

### Training Jumper 1.0m

**Fence Height:** 1.0m | Clean Round/Blue Ribbon

**Class Numbers:** 508, 509, 510

### Training Jumper 1.10m

**Fence Height:** 1.10m | Table II, 2.b

**Class Numbers:** 512, 513, 514



To reduce paperwork and streamline office work, all entries must be done on **HorseShowsOnline.com** for the Aiken Summer Classic. For adds/scratches, schedules, orders and online bill paying please go to **mobile.horseshowsonline.com**.



## Pony Jumper 1.05m & 1.10m

**Fence Height:** 1.05m (524), 1.10m (525 & 526)

Table II, 2.b

**Class Numbers:** 524, 525, 526

## JR/AM Jumper 0.75m

**Entry Fee:** \$50

**Fence Height:** 0.75m | Table II, 2b

**Class Numbers:** 527, 528, 529

## JR/AM Jumper 1.0m

**Fence Height:** 1.0m | Table II, 2.b

**Class Numbers:** 530, 531, 532

## JR Jumper 1.10m

**Class Entry Fee:** \$60 | **Prize Money:** \$250 per class

**Fence Height:** 1.10m | Table II, 2.b

**Class Numbers:** 533, 535

## JR Jumper 1.10m

**Class Entry Fee:** \$60 | **Prize Money:** \$250 per class

**Fence Height:** 1.10m | Table II, 2.c

**Class Number:** 534

## AM Jumper 1.10m

**Class Entry Fee:** \$60 | **Prize Money:** \$250 per class

**Fence Height:** 1.10m | Table II, 2.b

**Class Numbers:** 536, 538

## AM Jumper 1.10m

**Class Entry Fee:** \$60 | **Prize Money:** \$250 per class

**Fence Height:** 1.10m | Table II, 2.c

**Class Number:** 537

## NOMINATED JUMPER DIVISIONS AND CLASSES

**Required Nomination Fee: \$200**

## JR/AM Jumper 1.25m

**Class Entry Fee:** \$70 | **Prize Money:** \$750 per class

**Fence Height:** 1.25m | Table II, 2.b

**Class Numbers:** 562, 563

## JR/AM Jumper 1.35m

**Class Entry Fee:** \$70 | **Prize Money:** \$750 per class

**Fence Height:** 1.35m | Table II, 2.b

**Class Numbers:** 564, 565

## Open Jumper 1.20m

**Class Entry Fee:** \$70 | **Prize Money:** \$750 per class

**Fence Height:** 1.20m | Table II, 2.b

**Class Numbers:** 568, 569, 570

## Open Jumper 1.30m

**Class Entry Fee:** \$80 | **Prize Money:** \$1,000 per class

**Fence Height:** 1.30m | Table II, 2.b

**Class Numbers:** 571, 572, 573

## Open Jumper 1.40m

**Class Entry Fee:** \$160 | **Prize Money:** \$2,000 per class

**Fence Height:** 1.40m | Table II, 2.b

**Class Number:** 574

## JUMPER PRIZE MONEY BREAKDOWN

Jumper Prize Money awarded in accordance with JP.108.

### \$2,000 Class Prize Money:

\$730, \$480, \$250, \$200, \$180, \$160

### \$1,000 Class Prize Money:

\$365, \$240, \$125, \$100, \$90, \$80

### \$750 Class Prize Money:

\$235, \$160, \$110, \$95, \$80, \$70

### \$500 Class Prize Money:

\$140, \$100, \$75, \$65, \$60, \$60

### \$250 Class Prize Money:

\$70, \$54, \$40, \$34, \$32, \$20

### \$150 Class Prize Money:

\$40, \$32, \$25, \$22, \$21, \$10

### \$100 Class Prize Money:

\$30, \$22, \$15, \$12, \$11, \$10

## HUNTER CLASSICS

**Eligibility for Classes 600-621:** Must have entered, shown, and completed at least two over fences classes in the same division at the same show. For all Classics, a designated class of the division will count as the first round of the classic, with the top twelve scores returning to jump a second course. The second round competitors will return in order of lowest score to highest. In case of ties, order of those tied will be drawn. In case of ties, the second round will serve as tie breaker. Awards for Classes 600-620: Trophy & Ribbons 1-12. **Hunter Classics will run in accordance with USEF Rules and USHJA Zone 4 Specifications. Classes 614, 615, & 616 will be run in accordance with and Prize Money distributed per the USHJA specifications that are listed at USHJA.org.**

### A/O 3'6" & 3'3" Hunter Classic

**Class Entry Fee:** \$100 | **Prize Money:** \$1,000  
**Fence Heights:** 3'6" | **Class Number:** 600

### Junior 3'6" Hunter Classic

**Class Entry Fee:** \$100 | **Prize Money:** \$1,000  
**Fence Heights:** 3'6" | **Class Number:** 604

### Junior 3'3" Hunter Classic

**Class Entry Fee:** \$100 | **Prize Money:** \$1,000  
**Fence Height:** 3'3" | **Class Number:** 605

### Pony Hunter Classic

**Class Entry Fee:** \$100 | **Prize Money:** \$1,000  
**Fence Heights:** 2'3", 2'6", 2'9" | **Class Number:** 607

### Green Pony Hunter Classic

**Class Entry Fee:** \$50 | **Prize Money:** \$500  
**Fence Heights:** 2'3", 2'6", 2'9" | **Class Number:** 608

### NAL/WIHS AA Hunter Classic

**Class Entry Fee:** \$100 | **Prize Money:** \$1,000  
**Fence Height:** 3' | **Class Number:** 609

### NAL/WIHS Children's Hunter Classic 15-17

**Class Entry Fee:** \$50 | **Prize Money:** \$500  
**Fence Height:** 3' | **Class Number:** 611

### NAL/WIHS Children's Hunter Classic 14 & Under

**Class Entry Fee:** \$50 | **Prize Money:** \$500  
**Fence Height:** 3' | **Class Number:** 612

### 3'6"/3'9" USHJA Green Hunter Incentive

**Class Entry Fee:** \$100 + USHJA Fee | **Prize Money:** \$1,000  
**Fence Heights:** 3'6", 3'9" | **Class Number:** 614

### 3'/3'3" USHJA Green Hunter Incentive

**Class Entry Fee:** \$100 + USHJA Fee | **Prize Money:** \$1,000  
**Fence Heights:** 3', 3'3" | **Class Number:** 615

### 3'/3'3" USHJA Green Challenge

**Class Entry Fee:** \$100 + USHJA Fee | **Prize Money:** \$1,000  
**Fence Heights:** 3', 3'3" | **Class Number:** 616

### Children's Hunter Pony Classic

**Class Entry Fee:** \$45 | **Fence Heights:** 2', 2'6"  
**Class Number:** 617

### Children's 2'6" Hunter Classic

**Class Entry Fee:** \$45 | **Fence Height:** 2'6"  
**Class Number:** 618

### Adult 2'6" Hunter Classic

**Class Entry Fee:** \$45 | **Fence Height:** 2'6"  
**Class Number:** 619

### Baby Green Hunter Classic

**Class Entry Fee:** \$45 | **Fence Height:** 2'6"  
**Class Number:** 620

### SS/LS Hunter Classic

**Class Entry Fee:** \$45 | **Fence Height:** 2'  
**Class Number:** 621

### \$10,000 Open Hunter Classic

Two round classic. Declare your point section and fence height by 5:00pm the day before the classic. You must complete two rated classes before the classic in order to be eligible to compete in the Open Hunter Classic.

Green 3'3", 3'6", 3'9" | Performance 3'3", 3'6" | HP, HP Confirmation, Green Confirmation

**Class Entry Fee:** \$425 | **Prize Money:** \$10,000  
**Fence Heights:** 3'3", 3'6" & 3'9" | **Class Number:** 626

## HUNTER CLASSIC PRIZE MONEY

**\$10,000:** \$3,000, \$2,200, \$1,300, \$800, \$600, \$500, \$400, \$300, \$300, \$200, \$200, \$200

**\$1,000 Classic Prize Money:** \$300, \$220, \$150, \$100, \$80, \$50, \$50, \$50

**\$500 Classic Prize Money:** \$150, \$110, \$75, \$50, \$40, \$25, \$25, \$25



Marshall & Sterling Classic Hunter Derby at Aiken!

# AIKEN SUMMER CLASSIC

June 12 - 23, 2024



Marshall & Sterling  
Classic Hunter Derbies!



**Marshall  
& Sterling**  
INSURANCE  
EQUISPORT DIVISION

All Marshall & Sterling Classic Hunter Derbies 3' and 3'3", with Non-Pro Rider Bonuses are Qualifiers for the No Entry Fee \$25,000 Marshall & Sterling Classic Hunter Derby 3' and 3'3". **Derby to be held Week II at the 2024 Aiken Summer Classic!**

**The Marshall & Sterling Classic Hunter Derby is run every week at all Classic events!**



**Aiken Horse Park | Aiken, South Carolina**

For further information, please visit [classiccompany.com](http://classiccompany.com) or contact us at 843-768-5503 | [info@classiccompany.com](mailto:info@classiccompany.com).

**HUNTER DERBIES**

**\$2,500 USHJA Pony Hunter Derby (Week 2)**

**Entry Fee:** \$150 + \$25 USHJA Fee  
**Class Number:** 627

**\$5,000 USHJA Pony Hunter Derby Championships - East**

Tuesday, June 20th at 9:00am

**Entry Fee:** \$275

**Prize Money:** \$1,500, \$1,100, \$750, \$500, \$300, \$250, \$200, \$150, \$100, \$50, \$50, \$50

**Class Number:** 628

For complete specs of the class please see the USHJA website: USHJA.org



**Marshall & Sterling Classic Hunter Derby + Non-Pro Rider Bonuses**

**Fence Height:** 3' to 3'3" with 3'3" Options & 3'3" to 3'5" with 3'5" Options

**Non-Pro Rider Bonus:** A bonus will be awarded to the top three scoring Non-Pro Riders in the Low Section and the top three scoring Non-Pro Riders in the High Section.

**Entry Fee:** \$200 (1-19 Starters)

**\$2,000 Prize Money (1-19 Starters):** \$600, \$440, \$300, \$200, \$150, \$110, \$100, \$100

**\$500 Non-Pro Rider Bonus (1-19 Starters)**

Low Section: \$250, \$150, \$100

High Section: \$250, \$150, \$100

**Entry Fee:** \$250 (20 or more Starters)

**\$3,000 Prize Money (20 or more Starters):**

\$900, \$600, \$420, \$300, \$240, \$210, \$180, \$150

**\$1,000 Non-Pro Rider Bonus (20 or more Starters)**

Low Section: \$500, \$300, \$200

High Section: \$500, \$300, \$200

**Class Number:** 629

**Marshall & Sterling Classic Hunter Derby Finals at Aiken!**

**Friday, June 21st at 8:00am**

**\$25,000 Marshall & Sterling Classic Hunter Derby Finals (Week 2)**

This class is open to all horses. This will be a two-round classic with the top 12 returning for a second handy trip. The class will be judged and pinned 1-12. There will be a rider bonus for Non-Pro Riders to the top three 3' and top three 3'3". This class will be limited to the first 50 horses that enter the class. A \$500 voucher will be applied to all ribbon winners of the Marshall & Sterling 3' and 3'3" Classic Hunter Derby classes held at the following horse shows:

2024 Gulf Coast Winter Classic 1-6

2024 Ocala Spring Classic 1-3

2024 Aiken Summer Classic 1

**Entry Fee:** \$500

**\$20,000 Prize Money:**

\$6,000, \$4,400, \$2,600, \$1,600, \$1,200, \$1,000, \$800, \$600, \$600, \$400, \$400, \$400

**\$5,000 Bonus Prize Money for Non-Pro**

**3' Bonus:** \$2,500: \$1,250, \$750, \$500

**3'3" Bonus:** \$2,500: \$1,250, \$750, \$500

**Class Number:** 630

**USEF Rated Hunter Prize Money Offered/Awarded Guaranteed**

Show	2023 Offered	2023 Awarded	2024 Offered	Guaranteed
Aiken 1	\$50,900	\$39,805	\$50,900	\$5,000
Aiken 2	\$58,400	\$32,714	\$62,500	\$5,000

This information is a new requirement of USEF. The last column is the money that the show guarantees to be awarded. USEF already has the rule that National Shows must award \$5,000 so we really do not understand why this column is necessary but being rule abiding shows, we are listing it. None of the figures above include the thousands of unrated dollars awarded each week.



## JUMPER CLASSICS

All Jumper Classics run in accordance with USEF Rules and USHJA Zone 4 Specifications

### \$7,500 Welcome Classic (Week 1 & 2)

**Entry Fee:** \$350 | **Prize Money:** \$7,500

**Fence Height:** 1.35m | Table II,b

**Class Number:** 657

**Eligibility for Classes 659-678:** To be eligible, a rider must have entered in at least one other class of the same division at the same show. No Nomination Fee for classes 661 & 664.

**Attire:** Formal Attire.

**Awards:** Trophy & Ribbons 1-8

### JR/AM Jumper Classic 1.0m

**Entry Fee:** \$65 | **Prize Money:** \$500

**Fence Height:** 1.0m | **Class Number:** 659

### NAL/WIHS JR Jumper Classic 1.10m

**Entry Fee:** \$120 | **Prize Money:** \$1,500

**Fence Height:** 1.10m | Table II,b

**Class Number:** 661

### NAL/WIHS AM Jumper Classic 1.10m

**Entry Fee:** \$120 | **Prize Money:** \$1,500

**Fence Height:** 1.10m | Table II,b

**Class Number:** 664

If there are less than Eight (8) entries in any Jumper Classic, then the Classics will be combined. Horses may compete in only one JR/AM Classic.

### NAL JR/AM Jumper Classic 1.25m

Classic ribbons will break the tie for championship.

**Entry Fee:** \$160 | **Prize Money:** \$2,000

**Fence Height:** 1.25m

**Class Number:** 669

### NAL JR/AM Jumper Classic 1.35m

**Entry Fee:** \$175 | **Prize Money:** \$2,500

**Fence Height:** 1.35m

**Class Number:** 678

## JUMPER CLASSIC PRIZE MONEY

**\$7,500:** \$2,250, \$1,500, \$1,050, \$750, \$600, \$525, \$450, \$375

**\$2,500:** \$750, \$425, \$300, \$250, \$225, \$200, \$175, \$175

**\$2,000:** \$500, \$300, \$260, \$240, \$200, \$180, \$160, \$160

**\$1,500:** \$375, \$225, \$195, \$180, \$150, \$135, \$120, \$120

**\$500:** \$150, \$110, \$75, \$65, \$50, \$50

## GRAND PRIX SECTION

**Class Conditions USEF JP 122.4:** Grand Prix (Regional Standard) 1.40m - 1.45m with spreads to 1.60m, excluding Triple Bar and Water Jump. At least 4 Verticals and 2 Oxers must be set at 1.45m. The maximum spread for the Triple Bar is 1.80m, and the maximum spread for the Water Jump is 3.80m. To be conducted and scored under Table II.2.a.

Must have entered into another nominated jumper class at the same show. ALL HORSES MUST BE ON THE SHOW GROUNDS 24 HOURS PRIOR TO THE CLASS TO COMPLY WITH THE 24 HOUR RULE. Horses not on the grounds prior to that time will not be able to compete.

**Order of Go:** All horses showing in class 711 must be declared 24 hours prior to the class.

**Poling:** Absolutely no poling or offsets are allowed at any time on the Aiken Horse Park.

**Attire:** Formal attire required.

**Awards:** Winners to ride for presentation of awards. Trophy and Ribbons 1-12.

### \$25,000 Grand Prix (Week 1)

**Entry Fee:** \$500

**Prize Money:** \$7,500, \$5,500, \$3,250, \$2,000, \$1,500, \$1,250, \$1,000, \$750, \$750, \$500, \$500, \$500

**Class Number:** 711

### \$25,000 Sidelines Grand Prix (Week 2)

**Entry Fee:** \$500

**Prize Money:** \$7,500, \$5,500, \$3,250, \$2,000, \$1,500, \$1,250, \$1,000, \$750, \$750, \$500, \$500, \$500

**Class Number:** 711

## USEF Safe Sport Policy Information

All USEF Life and Senior Active members, as well as participants who have regular contact with minor athletes, are required to comply with the U.S. Center for Safe Sport training requirement to be eligible to participate in the competition. All participants must adhere to the U.S. Center for Safe Sport Code, USEF Safe Sport Policy, and the Minor Athlete Abuse Prevention Policies. More information about these can be found at [www.usef.org](http://www.usef.org).



# DEAR USEF PARTICIPANT

USEF thanks you for participating in this competition and your support of USEF's continuous efforts to provide the safest environment possible for our athletes and other participants. Strategies for safeguarding athletes continue to evolve, and we are fully committed to keeping pace with best practices.

The purpose of this letter is to remind you that you are bound by the U.S. Center for SafeSport Code, USEF Safe Sport Policy, and [Minor Athlete Abuse Prevention Policies](#), also known as the MAAPP. This includes the SafeSport Training requirement for adult members and participants who have regular contact with or authority over minor athletes. Additionally, please be reminded about reporting obligations. Any concerns that are non-sexual in nature, please use the [USEF Safe Sport Incident Reporting Form](#) available on the USEF website. Concerns or suspicions regarding sexual misconduct must be reported to <https://safesport.i-sight.com/portal> and the authorities if a minor is involved. All of this information can be found in the USEF [Safe Sport Policy](#).

Please take a moment to review the new USEF [Safe Sport web pages](#) on the USEF website to find comprehensive resources regarding USEF Safe Sport efforts. You can also contact Sarah Gilbert, USEF Safe Sport Program Coordinator, at [sgilbert@usef.org](mailto:sgilbert@usef.org) for any questions or concerns relating to the USEF Safe Sport program.

Thank you for your support and for helping us bring the joy of horse sports to as many people as possible!





# YOU ARE NOT YOU ALONE

A white silhouette of a person riding a horse is positioned in the center, overlapping the large blue text 'YOU ARE NOT YOU ALONE'.

US Equestrian wants you to know: if you are a victim or survivor of sexual abuse or suspect abuse of any kind, there are resources and people to help.

## REPORT

833-5US-SAFE or [uscenterforsafesport.org/report-a-concern](https://uscenterforsafesport.org/report-a-concern)

## 24/7 HELPLINE

866-200-0796 or visit [safesporthehelpline.org](https://safesporthehelpline.org)

## TRAINING & RESOURCES

Free to US Equestrian members at [usef.org/safesport](https://usef.org/safesport).

#youarenotalone





*Created by equine professionals to meet the demands & unique risks of equestrians.*

*As an employee-owned company, our pride in ownership drives us to be an insurance agency unlike any other.*

***Marshall  
& Sterling***  
INSURANCE  
EQUISPORT DIVISION

[www.MarshallSterling.com/Equisport](http://www.MarshallSterling.com/Equisport)

12798 West Forest Hill Blvd., Suite 102 Wellington, FL 33414 • Tel: 800-836-3046 • Fax: 561-557-5305

**The US Equestrian Board of Directors approved a rule change requiring that effective January 3, 2020. All US Equestrian (USEF) adult members with a Competing Membership must complete USEF's Safe Sport Training in order to be eligible to participate in USEF activities. Go to USEF.Org for Safe Sport Training information.**

Every class offered herein which is covered by the rules and specifications of the current USEF Rule Book will be conducted and judged in accordance therewith. **Eventing Competitions at the Modified Level or above, Combined Driving Competitions at the Advanced Level, Dressage Competitions, Endurance Rides and Vaulting Competitions: (See GR828.4 of the Federation rules). Life, senior active and junior active members shall be eligible to participate in all classes at Regular Competitions, Eventing Competitions at the Modified Level or above and Combined Driving Competitions at the Advanced Level, Dressage, Reining and Vaulting Competitions and Endurance Rides. A non-member may participate as a handler, rider, driver, owner, lessee, or agent, at Regular Competitions, Eventing Competitions, Dressage Competitions, Reining Competitions and Combined Driving Competitions upon payment of a Show Pass fee. Participants in the following classes are exempted from the Requirements of this rule: 1) leadline; 2) exhibitions; 3) games and races; 4) classes for 4-H members; 5) walk trot (exception: Friesian performance FR231) and academy classes (academy classes are classes limited to horses used regularly in a lesson program); 6) USDF introductory level tests, pas de deux and quadrille classes; 7) NRHA Endorsed Reining Competitions. 8) Opportunity classes, 9) citizens of other nations who have proof, in English, of current membership in good standing of their own National Federation, 10) USEA beginner novice division; and 11) assistant handlers in Dressage Sport Horse Breeding classes.**

The Horse Show Committee reserves the right to interpret all questions and conditions in regard to or arising out of, or incident to the show without claims for damages or recourse of any kind. All questions not covered in these Rules and Regulations shall be decided by the Horse Show Management; its decision to be final. The Horse Show Management reserves the right to limit entries in any class, section or division, to refuse, accept conditionally, or to cancel any

entries, disqualify any riders or exhibitors, prohibit exhibition of entries, and cancel award prizes, without any claim for damages; to change any course, to add a dotted line, to cancel or combine any unfilled classes, or to reschedule classes, after due notice to exhibitors; to change rings or rotate judges; to change specifications in jumper classes as competition warrants. Every horse entered herein for competition will be under the control of the Horse Show Management, but the Show Management will in no case be responsible for any loss or damage that may occur, and it shall be a condition of entry that each exhibitor shall hold the horse show and the officials, employees, directors, officers, sponsoring entities of the horse show and the facilities at which the horse show is held lameless for any loss or accident to his horse(s), employee(s), or equipment which may occur from sickness, fire or other cause. Each horse entered for competition will be assessed a USEF Federation Fee of \$23 (\$8 Drug and Medication/\$15 USEF) and a \$7 USHJA fee. While every effort has been made to avoid mistakes in this publication, the USEF, the Classic Company, Ltd. and its management assume no liability to anyone for errors. Any significant errors or changes will be disclosed to competitors whose entries are accepted upon their acceptance, and otherwise in accordance with USEF rules.

**Entries and Post Entries:** The closing date for entries of the Aiken Summer Classic is **Wednesday May 1, 2024** for both shows. After the closing entry date, stall fees are not refundable. Entries must be entered on HORSE-SHOWONLINE.COM and there is no service fee for using a credit card for the initial entry. There will be a service charge of 2.9% when checking out if using your credit card. Checks and cash are welcome. Post entries will be accepted and charged a \$50 per horse late fee. Details are available in the horse show office. The entry form for each show must include the following:

- Horse name and complete description;
- All classes or divisions entered;
- All mandatory signatures, including legal guardian in the case of a minor exhibiting;
- Organization membership numbers;
- Social Security or Federal ID number of owner.

**Stabling:** Stalls will be 12'x12' permanent with doors and ceiling fans or 10'x10' portable stalls under tents. Initial bedding will not be provided. Stalls, whether occupied by horse, feed, or tack will be available Monday June 10, 2024.



**Stalls:** All stalls are \$325 (includes door) and will be assigned on a first come, first served basis..

We have been sold out for the past three years and would suggest sending entries in early. Stall footings are mats.

**Motor Homes:** At the Aiken Summer Classic, motor homes and camper sites are available but VERY limited.

To ensure a camper space please complete the camper reservation form and return with payment (check or credit card) before arrival. \$350 per week includes septic. A \$50 fee will be added if not prepaid by closing date. Email jonathan@horseshowservices.com with questions.

**Competition Office Hours:**

Competition Days: Office opens one hour before the start of the first class and closes 30 minutes following the last class.

**Check Out:** Any horse show bills not checked out at the conclusion of each show will be assessed a \$50 fee for check out. Any mistakes at check out must be resolved within 24 hours. Please review your bills carefully.

**Day Exhibitors:** Horses ENTERED but not stabled at the horse show must use the designated area for day exhibitors. \$50 grounds fee will be assessed. Ship-Ins/Day Exhibitors at Management's discretion.

**Service Fee:** All horses, showing or non-showing, will be charged a \$85 fee. This fee allows the horse UNLIMITED add/scratches from classes, access to schooling areas and rings at designated times and defers all charges for parking passes.

**Splitting of Tack Stalls:** The Horse Show Office will be happy to split the tack stalls per the trainer's instructions among his/her customers up to Friday at 3:00 pm. At that point, the total amount will be billed to the trainer's barn account. Prepaid stalls will not be split.

**Paramedic Fee:** Per USEF HJ 105.3H, all Premier shows must have a paramedic as one of their Qualified Medical Personnels. Unfortunately, paramedics are **much** more expensive than a very qualified EMT. In order to be in compliance, we are forced to assess a \$5 fee to help cover this mandatory rule that went into effect as of 12/1/2019.

**Schooling:** Schooling in the show rings without permission is prohibited at all times. This includes riding, exercising and lunging. A \$100 fine will be assessed for anyone caught in the rings before or after the show without permission and will be eliminated from the competition.

**Lunging:** All lunging will be restricted to designated areas. Lunging will not be permitted in ANY ring areas at any time.

**Feed & Bedding:** In order to assure exhibitors of an adequate supply of feed, hay, and bedding based on fair market prices, no feed vendor other than Classic Horse Show Services will be permitted on the grounds without the express permission of management. For same day delivery, feed orders must be received prior to 12:00 noon. For feed and bedding reservations prior to arrival please use the form at classiccompany.com.

**Farrier:** No farrier other than the official competition farrier will be permitted to shoe on the grounds without express permission of the management. Exhibitors wishing to use another farrier must request a permit for that farrier at the Horse Show Office.

**Non-Negotiable Checks:** Checks returned by the bank for any reason will be assessed a penalty of \$50 or 15% of the check amount, whichever is greater. Upon notification of a returned check, accounts will be given three (3) days to make full payment, including the penalty, which must be paid in certified funds, cashier's check or money order. Overnight mail service is advised in order to avoid notification of the sanctioning organizations for disciplinary action.

**Poling and Offsets:** Manual poling and use of bamboo offsets are prohibited for all horses competing in the Aiken Summer Classic. Any rider, trainer, groom, or any other person who is in violation of the rules set forth above will be fined \$500 for each incident and may be suspended from further competition for the duration of the scheduled competition starting from the time of the incident. Any horse upon which a violation of the manual poling and/or use of bamboo offsets rule is perpetrated will be suspended from competition for the duration of the scheduled competition. All entry fees for the classes entered during the suspended period of the horse in question will be forfeited.

**Non-Showing Horses:** Non Showing Horses will be charged a non-showing fee of \$50 per horse.

**Formal Attire:**

**Hunters:** Riders are required to wear scarlet or dark coats; white shirts with white stock; white, buff or canary breeches. Members of the Armed Services or the Police may wear the Service Dress Uniform.



**Equitation:** Riders are required to wear conservatively colored coats (black, blue, green, grey or brown) which are free from adornment which in the judge's opinion is overly distracting. Shirts must have a choker, similar collar or tie. Breeches may be buff, canary, tan, rust or white.

**Jumpers:** Dark, muted or similar colored, or red (scarlet) coats are required; team or sponsored coats of different colors are also permitted; white or fawn breeches; a white tie, choker (unless the shirt, by design, has the choker built in for its intended use) or hunting stock, and a white or lightly colored shirt must be worn. Shirts must have a white collar and white cuffs. Shirts must be fastened at the neck and tucked into breeches. Boots are required. Half chaps are permitted as long as the color matches the paddock boots being worn. Members of the Armed Services or the police may wear the service dress uniform with protective headgear. (See General Rules, GR801.2)

**Minor Exhibitors:** Parent(s) and guardians of minor exhibitors shall hold the horse show management and facility harmless for any injury to such minor. No child's entry will be accepted or number issued unless entry is signed by parent or LEGAL guardian. No exceptions.

**Motorized Vehicles/Golf Carts:** Under South Carolina State Laws & USEF Rules unlicensed drivers are not permitted to operate any motorized vehicles, ATV's, motorcycles, golf carts, etc., on the show grounds. Failure to abide by these regulations will subject the exhibitor to suspension from the horse show.

**USEF GR 1301.7:** Minors who do not have a valid driver's license which allows them to operate a motorized vehicle in the state in which they reside will not be permitted to operate a motorized vehicle of any kind, including, but not limited to, golf carts, motorcycles, scooters, or farm utility vehicles, on the competition grounds of licensed competitions. Minors who have a valid temporary license may operate the above described motorized vehicles as long as they are accompanied by an adult with a valid driver's license. The parent(s), legal guardian(s), or individual who signs the entry blank as a parent or guardian of a minor operating a motorized vehicle in violation of this rule are solely responsible for any damages, claims, losses or actions resulting from that operation. Violations of this rule will be cause for sanctions against the parent(s), guardian(s) and/or trainer(s) who are responsible for the child committing the offense. Penalties may include exclusion of the child, parent(s), guardian(s), and/or trainer(s) from the competition grounds for the remainder of the competition and charges being filed

against any of the above individuals in accordance with Chapter 6. Wheelchairs and other mobility assistance devices for individuals with disabilities are exempt from this rule.

**Parking:** Fire regulations prohibit all vehicles, including trailers, vans and passenger vehicles from being parked in the stable areas. Vans and trailers will be allowed in the stable area only to load or off-load. PARKING AREAS WILL BE DESIGNATED AND VIOLATORS WILL BE TOWED AWAY AT OWNER'S EXPENSE.

**Protective Headgear:** It is compulsory for all persons at Federation licensed hunter, jumper or hunter/jumper competitions when mounted anywhere on the competition grounds, to wear properly fastened protective headgear which meets or exceeds ASTM (American Society for Testing and Materials)/SEI (Safety Equipment Institute) standards for equestrian use and carries the SEI tag. It must be properly fitted with harness secured. Exception: In Hunter or Jumper classes, adults may be allowed to remove their headgear while accepting prizes and during the playing of the National Anthem only; they must refasten their headgear prior to the lap of honor. Reference USEF GR 801.2 & 4, HU 128, & EG 105.1.

**Dogs:** There will be a Zero Tolerance Policy for Loose Dogs. All dogs must be restrained at all times while on the show grounds. Unrestrained dogs create a serious safety hazard for exhibitors and their horses. The dogs will be impounded and the owner charged \$100 that will be donated to the Humane Society. The owner of any dog that disrupts a Competitor's round in the ring will be required to reimburse said Competitor for their entry fees including the entire division fee.

**USEF GR 1301.6:** Dogs are not permitted to be loose on competition grounds and must be held on a leash or otherwise restrained. Individuals must not lead dogs on a leash while mounted. Dog owners are solely responsible for any damages, claims, losses or actions resulting from their dogs' behaviors. Dog owners failing to comply with this rule will be issued a Yellow warning card may be subject to penalty under Chapters 6 and 7. DOG OWNERS ARE SOLELY RESPONSIBLE FOR ANY DAMAGES, CLAIMS, LOSSES OR ACTIONS RESULTING FROM THEIR DOGS' BEHAVIORS.

**Prize Money:** Prize money will only be awarded to the recipient of record on the entry blank provided there is valid Social Security number or Federal ID number and corresponding name and address. Prize money will be printed at the conclusion of the event. Prize money



checks will be mailed within 30 days of the conclusion of the event. Please confirm information on entry form is correct to insure prompt and accurate delivery of prize money.

**Caveat:** Due to uncertainty:

- Jumper Classics or Grand Prix Classes offering \$25,000 or more in prize money require 15 entries; less than 15 the classes may have \$10,000 in prize money without an entry fee (\$0);
- Jumper Classics offering \$7,500 in prize money require 15 entries; less than 15 the class may have \$5,000 in prize money with a \$250 entry fee;
- All Jumper Classes offering prize money require 5 entries or the class may be cancelled.
- JR/AM Jumpers require 6 entries in each high and low otherwise the class will run as a JR/AM High Low;
- All Hunter Classics offering prize money require 6 entries or the classes may be combined or cancelled.

**Electrical/Fire Regulations:** All electrical installation and connections must meet all state and county codes. Aisles shall be maintained clear for a minimum of six (6) feet wide by eight (8) feet high. No obstructions or projections shall be allowed in these aisles. No Class I Flammable liquids such as gasoline are allowed inside the buildings. Cooking is not permitted within any stable area. Anyone found in violation shall be subject to dismissal from further participation in the horse show without recourse.

**Ticketed Warm-Up:** Tickets may be purchased in the Horse Show Office. Warm-up tickets are non-refundable.

**Liability:** The Classic Company, Ltd., Aiken Horse Park, Aiken Summer Classic, their officials, and employees will not be responsible for any accident or loss which may occur to any exhibitor, spectators, guest, rider, groom, attendant, other employees, animals, or equipment at the events. All owners and competitors are personally responsible for damages to third persons caused by themselves, their employees, their agents, their horses, or their dogs. They are therefore strongly advised to take out third party insurance providing full coverage for participation in equestrian events, and to keep that policy up to date.

**WARNING: UNDER SOUTH CAROLINA LAW, AN EQUINE ACTIVITY OR EQUINE SPONSOR IS NOT LIABLE FOR AN INJURY TO OR THE DEATH OF A PARTICIPANT IN EQUINE ACTIVITIES RESULTING FROM THE INHERENT RISKS OF EQUINE ACTIVITIES PURSUANT TO THIS ACT.**

**Address/Phone during Horse Show:**

Aiken Horse Park  
931 Powerhouse Road  
Aiken, South Carolina 29803  
803-226-0121

The horse show will sign for your package delivered by UPS, FedEx, or other overnight carriers but does so as a courtesy. **The US Post Office does not deliver packages to the Aiken Horse Park.** Please do not ship to the horse park using USPS. The show or facility will not accept responsibility for the package(s). If the package is valuable, please check with the office each day regarding possible delivery.

**Footing/Ring Size:** Footing is all weather.

Rings 1-3: 300' x 150'  
West Ring: 225' x 300'

**Closet Medical Facilities:**

- **Nearest Hospital with Emergency Care**  
Aiken Regional Medical Center Emergency Room,  
302 University Parkway, Aiken, SC 29801 |  
(803) 641-5000 | 5.7 miles from showgrounds
- **Nearest Hospital with Level 1 Trauma Center**  
Augusta University Medical Center, 1120 15th  
Street, Augusta, GA 30912 | (706) 721-3153 |  
20.1 miles from showgrounds

**ADDITIONAL TERMS AND DEFINITIONS OF THE RELEASE OF LIABILITY, ASSUMPTION OF RISK, WAIVER AND INDEMNIFICATION**

In consideration for entry upon the SHOW GROUND FACILITIES of the COMPETITION, the undersigned on behalf of myself, my trainers, instructors, coaches, clients, agents, employees, grooms, invitees, representatives, assigns, executors, heirs, independent contractors (including but not limited to veterinarians, farriers, masseuse, chiropractor, therapists, braiders, shippers), and, if applicable, on behalf of my minor child or children (hereinafter collectively referred to as "I") agrees:

I agree that COMPETITION as used in this entry blank, in the prize list and in the USEF rules means Aiken Summer Classic, each and every class and/or event conducted and ALL ACTIVITIES that I undertake AT ANY TIME and for any purpose upon entry of the SHOW GROUND FACILITIES including any horse which is on the SHOW GROUND FACILITIES for my use, in my control or at my request. I further agree that COMPETITION includes the entire week of the horse show including the time horses and/or people are allowed to enter to set up, stable and/or conduct business whether its expressly and/or specifically related to the horse show and classes being conducted/held that week through and including the time all horses and/or people vacate the SHOW GROUND FACILITIES.



I agree that this Release of Liability includes any horse that I have asked to come onto the SHOW GROUND FACILITIES for any purpose, and/or is in my control and/or custody and regardless whether the horse is being stabled at the SHOW GROUND FACILITIES and/or competing in the COMPETITION.

I agree that "RELEASED PARTIES" means the "Competition" known as Aiken Summer Classic, the "Horse Show Management" and/or "Competition Management" as referenced in the prize list, the Federation Licensee, Classic Company and each of their officers, directors, managers, members, owners, shareholders, employees, representatives, agents, subsidiaries, volunteers, officials, affiliated and associated persons, companies and organizations, assigns and entities or organizations as may now or hereafter be constituted, that own, are related to or manage the property owned by such entities.

I agree that SHOW GROUND FACILITIES means including but not limited to all improvements, structures (permanent or temporary), buildings, tents, stalls, fixtures (including but not limited to all jumps and related equipment), arenas (and the footing therein) located on the premises and/or provided by RELEASED PARTIES during the COMPETITION. I agree that if I am not a member of the Federation that I will abide by all rules and regulations of the Federation. I agree that the Rules of the Prize List are incorporated as if set forth herein.

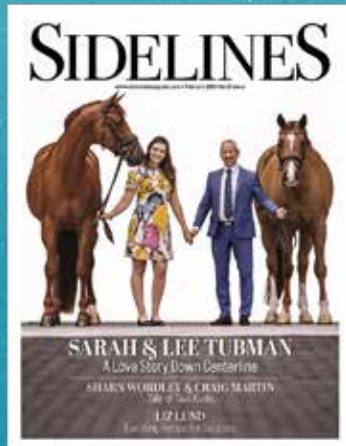
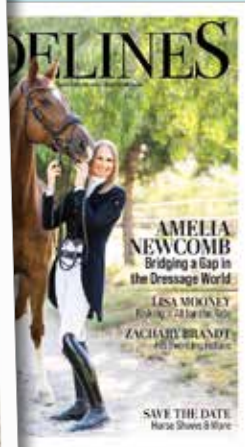
**Release and Waiver of Claims:** I hereby fully and forever release, waive and discharge the RELEASED PARTIES and each of them who are or might be liable in any way from any and all claims, demands, actions, causes of actions, liabilities of any kind which I may or might have against RELEASED PARTIES or any of them, arising from or by reason of any and all known and unknown, foreseen or unforeseen bodily and personal injuries, damage to property, injury to horse and any consequences thereof, which I may sustain due to the ordinary negligence of RELEASED PARTIES; I further agree that except for the gross negligence or willful misconduct of the RELEASED PARTIES, I SHALL NOT SUE or bring any legal action, claim, and/or demand against for any economic and non-economic losses due to bodily injury, death, property damage and/or injury to any horse in relation to the SHOW GROUND FACILITIES and/or the operation and conduct of the COMPETITION. I agree this RELEASE INCLUDES ALL ACTIVITIES I PARTICIPATE IN AND ALL AREAS OF THE SHOW GROUND FACILITIES as defined above. This release also includes all activities I conduct at the SHOW GROUND FACILITIES and includes all times that I am at the SHOW GROUND FACILITIES no matter what the purpose and/or activity being undertaken.

**Hold Harmless:** I hereby agree to defend, indemnify and hold harmless RELEASED PARTIES from and against any and all claims, liabilities, loss, damages, demands, actions, causes of action, including attorneys' fees, cost and expenses of any kind, which may be made against them, or any of them, which arise out of the active or passive negligence of RELEASED PARTIES while either I or any horse at my request or in my control is/was on the SHOW GROUND FACILITIES and/or participating in the COMPETITION. I agree to defend RELEASED PARTIES, at my expense, regardless if RELEASED PARTIES are negligent or not.

**Assumption of Risk:** I hereby acknowledge and assume the risk that equestrian activity, including jumping, is very dangerous and involves the risk of serious injury and/or death and/or property damage. I expressly acknowledge that injuries may be compounded or increased by negligent maintenance of the SHOW GROUND FACILITIES, faulty or improperly secured equipment, improper supervision or compliance with Federation rules and regulations. Acts of God and negligent rescue operations or procedures of RELEASED PARTIES and negligent handling of horses and independent operations by trainers, riders and/or boarders who use the SHOW GROUND FACILITIES or others who are not affiliated with RELEASED PARTIES. I acknowledge that horses can be injured while being ridden, groomed, stabled, walked and/or exercised and I expressly assume the risk of injury to any horse under my control and/or custody or on the SHOW GROUND FACILITIES at my request.

This agreement shall be governed by the laws of the State of South Carolina with respect to all RELEASED PARTIES, except for the Federation as set forth on page one. I agree this Release extends to all acts of ordinary negligence of RELEASED PARTIES and is intended to be as broad and inclusive as permitted by law. If any portion of this Release and/or Entry Blank is held invalid, it is agreed that the balance shall continue in full legal force and effect. I have not relied on any oral representations or statements made that are contrary to or modify the above Release or warnings. I agree that by signing the front page of this Entry Blank that I am bound by the Release, waiver and warnings contained herein and that both sides/pages constitute one incorporated agreement. I agree I have the express authority to sign this entry blank/Release on behalf of the owner and/or rider.





**Never Miss An Issue!**

**Subscribe now for \$14.95!**  
**Order at [www.sidelinesmagazine.com](http://www.sidelinesmagazine.com)**

SIDELINES IS DEVOTED TO THE PEOPLE AND PERSONALITIES THAT MAKE THE HORSE WORLD EXCITING.



## 2024 BIOSECURITY PROTOCOLS

The Classic Company is dedicated to the health, welfare and safety of all exhibitors both equine and human. To protect our equine partners, we will be enforcing the following protocols at all the Aiken Summer Classic horse shows.

**It is advised that all horses stabling on the Aiken Summer Classic show grounds arrive between 7:00 a.m. and 6:00 p.m. If it is necessary to arrive at any other time you must check in with the night security officer.**

1. A current (within 12 months) negative Coggins test is required.
2. A Health Certificate must be signed by a licensed veterinarian within 30 days of arrival at the Aiken Summer Classic Show Grounds.
3. Any horse on the show grounds with a fever of unknown origin or of suspicious origin must be reported to Aiken Summer Classic Show Management and to the Show Veterinarian. It is always better to err on the side of safety. Isolation stalls will either be available on the grounds or at a local veterinary practice if the need arises.
4. Please take the time to review good equine hygiene practices. Please convey the importance of this to your equine caretakers for their daily routines. Classic Company strives to provide a safe and enjoyable show experience. An important part of that experience is maintaining healthy horses.

### 5. USEF GR845 Equine Vaccination Rule

1. At Federation licensed competitions horses, more than 7 months of age, entering the grounds must be accompanied by documentation of Equine Influenza Virus and Equine Herpes Virus (Rhinopneumonitis) vaccinations within six months prior to entering the stables.

Horses not in compliance with this rule may be required to leave the competition grounds upon request by Competition Management. Documentation should consist of one of the following methods mentioned below. The frequency of vaccine administration should be per the vaccine manufacturers' or veterinarian's recommendations. It is recommended that vaccines are administered by or under the direction of a veterinarian.

2. In the case of vaccines administered by a veterinarian, the exhibitor, upon request by Competition Management, must provide documentation from the veterinarian on documenting that the horse in question received the vaccinations; name of the vaccines and date of vaccine administration.
3. In the case of vaccines administered by a person other than a veterinarian, the exhibitor, upon request by Competition Management, must provide a receipt of the vaccine purchase which is signed by the owner, or agent with care, custody, and control of the horse; name, serial number and expiration date of the vaccine; and date of vaccine administration.
4. In the case of a horse that is unable to receive either of the vaccinations due to a history of adverse reactions, the exhibitor, upon request by Competition Management, must provide a letter from the veterinarian on official letterhead stating that the horse in question cannot be vaccinated due to medical concerns and a log of temperatures taken twice daily for the seven days prior to entering the competition grounds. These horses must also have their temperature taken and logged twice daily while on the competition grounds. The log of temperatures should be provided to the Competition Management, steward, or technical delegate when requested.
5. Competition Management may not amend or enhance vaccination requirements without prior approval of the Veterinary Committee.

***Thank You for Choosing to Show with the Classic Company!***



# show biz

For fifty years, The Clothes Horse  
has been handcrafting  
custom made bespoke horse  
garments with artistry and integrity.  
Each time. Every time.  
That's our commitment to you.



[www.theclotheshorse.com](http://www.theclotheshorse.com)  
856.829.8460

# Gold Always Sets the Standard



Top-rated underwriters with  
time-tested products...  
providing excellent service  
for more than 40 years.

## EMO...Ride with the Leaders



**The EMO Agency, Inc.**  
400 Rosedale Ct., Warrenton, VA 20186  
National **800-347-3552**  
West Coast **818-848-0443**  
[www.RIDEEMO.com](http://www.RIDEEMO.com)

*Eye Was Here Photography*



## *Official Horse Show Photography*

**Prints & Digital Files Sold On-Site**

(Prepaid sign-ups also available online)

Dave Butterworth

[EyeWasHerePhoto@gmail.com](mailto:EyeWasHerePhoto@gmail.com)

[www.EyeWasHere.net](http://www.EyeWasHere.net)

Instagram: [eye.was.here](https://www.instagram.com/eye.was.here)

[www.facebook.com/EyeWasHerePhoto](https://www.facebook.com/EyeWasHerePhoto)



# WAIVER AND RELEASE OF LIABILITY, ASSUMPTION OF RISK AND INDEMNITY AGREEMENT

For and in consideration of United States Equestrian Federation, Inc. dba US Equestrian ("USEF") allowing me, the undersigned, to participate in any capacity (including as a rider, driver, handler, vaulter, longeur, lessee, owner, agent, coach, official, trainer or volunteer) in a USEF sanctioned, licensed or approved event or activity, including but not limited to equestrian clinics, practices, shows, competitions and related or incidental activities and \_\_\_\_\_ ("USEF Event" or "USEF Events"); I, for myself, and on behalf of my spouse, children, heirs and next of kin, and any legal and personal representatives, executors, administrators, successors, and assigns, hereby agree to and make the following contractual representations pursuant to this Agreement (the "Agreement"):

A. RULES AND REGULATIONS: I hereby agree that I have read, understand, and agree to be bound by all applicable Federation Bylaws, rules, and policies including the USEF Safe Sport Policy and Minor Athlete Abuse Prevention Policies (MAAPP) as published at www.usef.org, as amended from time to time.

B. ACKNOWLEDGMENT OF RISK: I knowingly, willingly, and voluntarily acknowledge the inherent risks associated with the sport of equestrian and know that horseback riding and related equestrian activities are inherently dangerous, and that participation in any USEF Event involves risks and dangers including, without limitation, the potential for serious bodily injury (including broken bones, head or neck injuries), sickness and disease (including communicable diseases), trauma, pain & suffering, permanent disability, paralysis and death; loss of or damage to personal property (including my mount & equipment) arising out of the unpredictable behavior of horses; exposure to extreme conditions and circumstances; accidents involving other participants, event staff, volunteers or spectators; contact or collision with other participants and horses, natural or manmade objects; adverse weather conditions; facilities issues and premises conditions; failure of protective equipment (including helmets); inadequate safety measures; participants of varying skill levels; situations beyond the immediate control of the USEF Event organizers and competition management; and other undefined, not readily foreseeable and presently unknown risks and dangers ("Risks").

### WARNING:

**Under South Carolina law, an equine activity sponsor or equine professional is not liable for an injury to or the death of a participant in an equine activity resulting from an inherent risk of equine activity, pursuant to Article 7, Chapter 9 of Title 47, Code of Laws of South Carolina, 1976.**

C. ASSUMPTION OF RISK: I understand that the aforementioned Risks may be caused in whole or in part or result directly or indirectly from the negligence of my own actions or inactions, the actions or inactions of others participating in the USEF Events, or the negligent acts or omissions of the Released Parties defined below, and I hereby voluntarily and knowingly assume all such Risks and responsibility for any damages, liabilities, losses, or expenses that I incur as a result of my participation in any USEF Events. I also agree to be responsible for any injury or damage caused by me, my horse, my employees or contractors under my direction and control at any USEF Event.

D. WAIVER AND RELEASE OF LIABILITY, HOLD HARMLESS AND INDEMNITY: In conjunction with my participation in any USEF Event, I hereby release, waive and covenant not to sue, and further agree to indemnify, defend and hold harmless the following parties: USEF, USEF Recognized Affiliate Associations, the United States Olympic & Paralympic Committee (USOPC), USEF clubs, members, Event participants (including athletes/riders, coaches, trainers, judges/officials, and other personnel), the Event owner, licensee, and competition managers; the promoters, sponsors, or advertisers of any USEF Event; any charity or other beneficiary which may benefit from the USEF Event; the owners, managers, or lessors of any facilities or premises where a USEF Event may be held; and all directors, officers, employees, agents, contractors, and volunteers of any of the aforementioned parties (**Individually and Collectively, the "Released Parties" or "Event Organizers"**), with respect to any liability, claim(s), demand(s), cause(s) of action, damage(s), loss, or expense (including court costs and reasonable attorney fees) of any kind or nature ("**Liability**") which may arise out of, result from, or relate in any way to my participation in the USEF Events, including claims for Liability caused in whole or in part by the negligent acts or omissions of the Released Parties.

E. COMPLETE AGREEMENT AND SEVERABILITY CLAUSE: This Agreement represents the complete understanding between the parties regarding these issues and no oral representations, statements or inducements have been made apart from this Agreement. If any provision of this Agreement is held to be unlawful, void, or for any reason unenforceable, then that provision shall be deemed severable from this Agreement and shall not affect the validity and enforceability of any remaining provisions.

**I HAVE CAREFULLY READ THIS DOCUMENT IN ITS ENTIRETY, UNDERSTAND ALL OF ITS TERMS AND CONDITIONS, AND KNOW IT CONTAINS AN ASSUMPTION OF RISK, RELEASE AND WAIVER FROM LIABILITY, AS WELL AS A HOLD HARMLESS AND INDEMNIFICATION OBLIGATIONS.**

By signing below, that I have read, understand, and agree to be bound by all applicable Federation Bylaws, rules, and policies including the USEF Safe Sport Policy and Minor Athlete Abuse Prevention Policies (MAAPP) as published at www.usef.org, as amended from time to time, as well as all terms and provisions of this Prize List. If, despite this Agreement, I, or anyone on my behalf or the minor's behalf, makes a claim for Liability against any of the Released Parties, I will indemnify, defend and hold harmless each of the Released Parties from any such Liabilities as the result of such claim.

**The parties agree that this agreement may be electronically signed. The parties agree that the electronic signatures appearing on this agreement are the same as handwritten signatures for the purposes of validity, enforceability, and admissibility.**

RIDER/DRIVER/HANDLER/VAULTER/LONGEUR  OWNER  TRAINER  OFFICIAL  STAFF  VOLUNTEER  COACH (IF APPLICABLE)

Signature: \_\_\_\_\_ Date: \_\_\_\_\_ Print Name: \_\_\_\_\_

Parent/Guardian Signature: (Required if Rider/Driver/Handler/Vaulter/Longeur is a minor) \_\_\_\_\_ Date: \_\_\_\_\_

Print Parent//Guardian Name: \_\_\_\_\_ Emergency Contact Phone No. \_\_\_\_\_

The **2024 Aiken Summer Classic** is operated in accordance with the current rules of the USEF of which body it is a Regular Member Competition and is **Rated National:** Green Hunter, High Performance Hunter, Green Conformation Hunter, Regular Conformation Hunter, Amateur Owner Hunter, Junior Hunter, Pony Hunter, Green Pony Hunter, Green Hunter 3' & 3'3"

**C Rated:** Adult Amateur Hunter, Children's Hunter, Children's Hunter Pony, 2'6" Adult Hunter, 2'6" Children's Hunter



# MAAPP

## MINOR ATHLETE ABUSE PREVENTION

### LEARN ABOUT MAAP POLICIES



Safe Sport Training



Local Travel



One-On-One Interactions



Social Media & Electronic Communications



Read about these & more at [usef.org/MAAPP](https://usef.org/MAAPP)

### REPORT MAAP POLICY VIOLATIONS



[usef.org/safe-sport/reporting](https://usef.org/safe-sport/reporting)

859-225-6915 or Text Anonymously 855-682-8733

